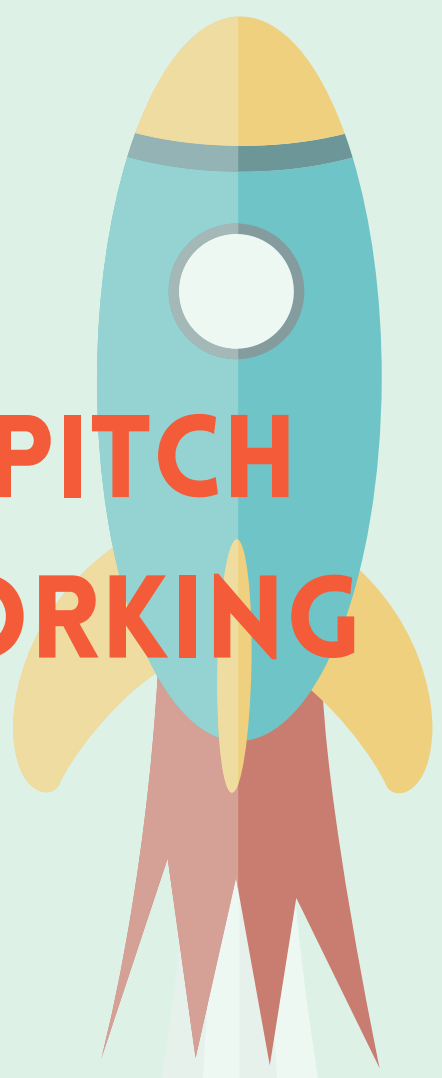


Big Idea
CONNECTpreneur
Investor Network

VIRTUAL ROCKET PITCH
+ POWER NETWORKING



December 21, 2022

CONNECTpreneur.org

AGENDA

11:00-11:05am | VIRTUAL NETWORKING (via Private Message)

11:05-11:20am | WELCOME and INTRODUCTIONS

- TIEN WONG, Founder and Host, **CONNECTpreneur Community**

- CHRIS NICOSIA, VP of Partnerships, **Modus Create**

11:20-12:20pm | ROCKET PITCH SESSION Companies will be introduced by:

- ANTHONY MILLIN, Founder and Chair, **NEXT powered by Shulman Rogers**

- LAUREN ZIEGLER, Of Counsel, **Nemphos Braue**

**12:20-1:00pm | BREAKOUT ROOMS & NETWORKING
(Breakout rooms hosted by presenting companies)**

December 21, 2022

CONNECTpreneur.org

PRESENTING COMPANIES

AGED Diagnostics - Rachel Zayas

Alyve Medical Inc. - Yvonne Bokelman

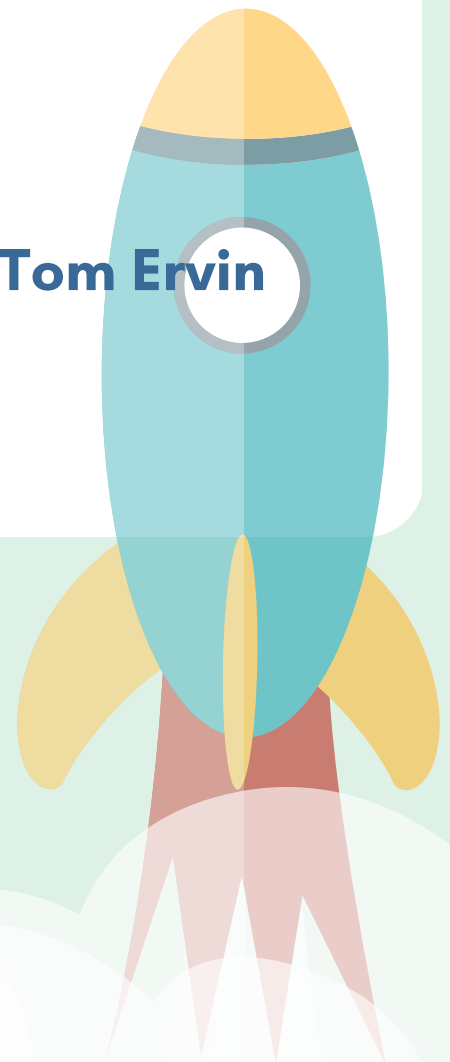
Plant Culture Systems - Sanjay Kumar Rajpoot

SolasAI Inc. - Larry Bradley

StackCare - Nigel Mould

Sunset Technologies, Inc dba Noni - Tom Ervin

Weavy - Rickard Hansson



SPEAKERS



TIEN WONG, CEO, OPUS8, INC. [etienwong](#)

Tien is CEO of Opus8, an investment and advisory firm which helps technology companies and alternative investment fund managers raise capital. He is also Chairman of Lumious, a leader in corporate tech training and learning analytics, as well as Chairman of Lore Systems, a provider of network engineering, cloud computing, and strategic IT consulting. In 1991, Tien co-founded and served as CEO of CyberRep, Inc. until its acquisition in 2003 by Affiliated Computer Services. CyberRep was one of the largest CRM outsourcing companies in the world with over 2,300 employees and \$80 million in revenue. Today, the CyberRep/ACS business unit is one of the world's largest call center operations, with nearly \$3 billion in revenue as divisions of Xerox, Conduent, and Continuum. CyberRep was ranked for 4 consecutive years in INC. Magazine's "Inc. 500" as one of the fastest-growing companies in the USA. CyberRep was profitable for 11 straight years and was backed by Allied Capital Corporation.

Tien is a recognized international expert in CRM, direct marketing, and BPO, having presented at dozens of industry events around the world on CRM and BPO topics. He has provided industry commentary on the ABC, Fox, NBC, CNBC, Maryland Public Television, and China's CCTV networks, as well as Time Magazine, The Washington Post, Inc. Magazine, and Success Magazine. He serves on several boards including the Montgomery County (MD) Economic Development Corp., Center for Innovation Technology GAP Fund's Investment Advisory Board, Junior Achievement, and Refraction. He was appointed by Governor Martin O'Malley to the 9-member Maryland Venture Fund Authority which allocates and manages over \$130 million of capital which is invested into top-tier venture funds and startups. He is an Entrepreneur in Residence at Georgetown University's McDonough School of Business, and a graduate of Dartmouth College.



CHRIS NICOSIA, VP OF PARTNERSHIPS, MODUS CREATE

Chris leads and manages all partnerships at Modus Create. Having spent his professional career in a variety of roles within software, IT, and consulting organizations, Chris is able to identify strategy opportunities within the broad partnership ecosystem and create relationships that drive value to our clients, team members, and each respective partner.

AGED Diagnostics is using genomic innovation to develop the most accurate blood test for liver disease to help physicians keep patients in the monitoring program, reduce the financial burden for health insurers and improve patient outcomes through early detection and intervention.



Problem Statement

While 1 in 3 (100 million) Americans have liver disease, many are unaware until the disease has progressed to later stages at which time the disease is no longer curable, patient outcomes are poor and healthcare spending can cost up to \$1,000,000 per patient.

\$1,000,000 Healthcare spending per patient for late stage diagnosis



Economic Burden

Annually, US health insurers spend \$108 Billion on management for nonalcoholic steatohepatitis (NASH, liver disease) and an additional \$184 Billion as a societal burden, calculated as the monetary value to quality of life-years lost due to liver disease.



AGED Solution

AGED is developing the most accurate blood test that can differentiate benign from advanced liver disease and simultaneously stage fibrosis (liver scarring) through a targeted genomic sequencing assessment.



Competition

The sole diagnostic tool for NASH is a liver biopsy, which is expensive, invasive, prone to sampling error, and bleeding. Imaging tools fail in nearly 60% of patients. There are few effective noninvasive & accurate tests that can *diagnose* NASH.

60% Of the time imaging tools fail to diagnose NASH in patients who have the disease



Competitive Advantage

AGED methods is the first and only accurate, non-invasive tool that can diagnose NASH and stage fibrosis. Other serum tests target markers found in benign liver disease, our proprietary methods alleviate challenges by targeting markers highly specific to NASH and fibrosis.



Traction

- Q1, 2019 NSF Grant, NSF ICorp
- Q3, 2020 Healthworx CareFirst BlueCross BlueShield (BCBS) Fellowship
- Q4, 2020 Filed full PCT (international) patent
Presented work at Annual Liver Conference
Published work in Hepatology
- Q3, 2021 Closed Pre-Seed Round
- Q3, 2022 Pilot Study, validated core technology in the lab in patient plasma samples

Path to Commercialization

- Q1, 2023 R&D test method verification, expand sample size
- Q1, 2024 Clinical Trial, Georgetown University
- Q3, 2024 CLIA Approval
Acquire Codes & Coverage
- Q1, 2025 Market Launch

\$3.5 million

Funding to Achieve Path to Market

Financial Projections

Target Market (TM) 25 million patients
\$700 per unit

- Year 1 0.1% TM, 12 physicians, 25,000 patients, **Revenue \$17.5M**
- Year 3 1% TM, 120 physicians, 250,000 patients, **Revenue \$175M**
- Year 5 5% TM, 600 physicians, 1.25 million patients, **Revenue \$875M**

Team



Rachel Zayas
Geneticist, MBA, Founder/CEO



Dr. Justin Topp
Geneticist, Director of Scientific Innovation



Dr. Bongsoo Park
Bioinformaticst, Lead Bioinformaticist



Arun Sanyal, MD
Hepatologist, Virginia Commonwealth U.
Clinical Collaborator

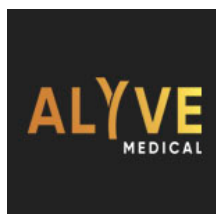


Naim Alkhouri, MD
Hepatologist, Director Fatty Liver Program
Clinical Collaborator



Coleman Irving Smith, MD
Transplant Hepatologist, Georgetown
Clinical Collaborator

Interested in learning more?
Contact us at info@ageddiagnostics.com



Investor Highlights

Value Proposition: Through the deployment of innovative sensor-based tools and patented algorithms, Alyve Medical has brought to market revolutionary technologies that are changing the paradigm of musculoskeletal treatment. Focused on disrupting the standard of care to allow patients to achieve optimal motion.

Company Background: Alyve Medical’s pioneering technologies are reimagining the standard for assessing and managing musculoskeletal motion and rehabilitation. Combining advanced sensor technology, biofeedback mechanisms and kinematic analysis in non-invasive and portable devices they are putting powerful new tools in the hands of healthcare professionals to assess, treat and monitor patients both in-person and remotely to facilitate optimal outcomes in musculoskeletal care.

Leadership Team: Our founders and leadership team have had over 200 years of medical device and orthopedic experience and in aggregate, 7 exits, raised >\$100M and 16 acquisitions.

Products/Services: No other existing therapy or device for shoulder rehabilitation and treatment “retrains the brain” and provides for a neuroplastic connection and sustained long term outcomes. Deploying patented algorithms and sensors in therapeutic and diagnostic device that provide for objective data, as well as through trimodal biofeedback, compliance is increased with physical therapy protocols.

Technologies/Special Know-How: Patents exist for both products in the US, several countries in the EU and Japan. For Neuralign S, the patented Motion Activated Stimulation (MAS) provides for dynamic personalized interaction that does not exist with any other stimulation product. An algorithm modulates the intensity which is dynamically controlled by device, and multi-sensor input afferences amplify the neuroplastic effect. With ShowMotion, we have a proprietary algorithm, exclusive WISE IMU sensors, and provides instant graphic results anywhere.

Market: Our target market is broadly almost any shoulder pathology (surgical and non-surgical), and shoulder rehabilitation patients/users around the globe. Orthopedic Shoulder CAGR is 8%. Over 700,000 shoulder surgeries are done in the US and more than 2x that globally. TAM >\$11B, SAM \$3B and SOM \$500M. Revenue model is transactional B2B model sold to Surgeons, Hospitals and Healthcare facilities and PT Clinics. A patient rental model rolls out in December 2022.

Distribution Channels: Direct reps (Clinical consultants), 1099 and distributor reps, and distributor entities.

Competition: Innovation and differentiation separate Alyve Medical’s products. The most significant competitor is the prescription of the “gold standard” - physical therapy. Educating orthopedic surgeons and PTs as to the innovation and clinical data that shows statistically significant improvement and sustained outcomes makes the case for the Neuralign S product. There are other products in the remote PT space, and other stimulator and rehab devices used for pain, but none are exclusively focused on the shoulder and deliver the long term results.

Quick Facts

Company Name: Alyve Medical
Contact: Yvonne Bokelman,
Chief Executive Officer
Address: 600 S. Cherry St. Suite
115
Glendale, CO 80246

Phone: 303-619-1261
Email:
ybokelman@alyvemedical.com
Website:
<https://www.alyvemedical.com>

Industry: Life Sciences
Domain: Medical Device,
Orthopedics

Bank: Bank of America
Law Firm: Alexius Solutions

Patent Estate: One issued and
one pending in the US; multiple
patents in the EU and Japan.
More patents under draft.

Number of Employees: 8
Leadership Team: Noted
Amount of Financing Sought:
\$1.6M in Seed (convertible note)
and Series A to follow in early
2023

Current Investors: All qualified
investors, HNW and Angels.

Use of Funds: Sales &
Marketing, R&D, G&A, Clinical
and Regulatory

Financial Projections (Unaudited):

	2022	2023	2024	2025	2025
Revenue	\$605,000	\$4,825,000	\$13,825,000	\$22,260,000	
EBIT (dollars in thousands)	(\$570,562)	(\$1,615,675)	\$3,188,259	\$7,463,682	

Value Proposition: Best Value Climate Sustainable Hydroponic / Vertical Farming Company in America.

Company Background: Amidst climate and geopolitical driven food shocks, droughts are unprecedented, soil is degrading 20 times faster than it is replenishing, and food systems contribute up to 40% of total greenhouse gas emissions. Plant Culture Systems applies the most cutting edge innovations to agriculture to continuously redefine produce optimization from seed to fork anywhere, anytime. PCS makes fresh hydroponic produce locally accessible by financing, constructing, and operating decentralized vertical farm packs. As 60% of average vertical farm operational cost is energy and labor, PCS makes premium quality more economical than all hydroponic competitors using artificial intelligence, solar energy, and robotics. Growing with 100% less soil, 99% less water, 90% less waste, and 70% less carbon than field grown, PCS enables a sustainable food future.

Leadership Team: Sanjay Rajpoot has 10 years of AgTech experience across 4 companies and \$125M+ of value creation including FarmX (largest IoT / AI network helping farmers save water and increase yield across CA). Heiner Lieth, PhD is a world leading hydroponics expert and UC Davis professor emeritus who worked with every major hydroponics industry leader in the past 36 years. Kam Hosn scaled several startups in IoT in addition to his own supercar company. Andy Mutz led engineering for first \$1BN digital Ag Exit. We developed our company in collaboration with UC Davis and University of California Agriculture & Natural Resources professors, and participation in NVIDIA AI Inception Program, USC Marshall Greif School of Business Incubator, and Draper University.

Products/Services: *We offer the most affordable premium microgreen produce service in the nation*

Technologies/Special Know-How: Our design / usage of artificial intelligence networks to predict growth is proprietary. Our installed base with customers will be a key barrier to entry for any competitors. Our technology team has over \$1.2BN of Digital Ag Applied AI experience.

Market: There is \$10BN of annual total addressable market in America for hydroponic crops with microgreens, leafy greens, herbs, and fruiting veggies.

Distribution Channels: Plant Culture Systems relies on a direct sales force to customers who provide indirect distribution channels to end consumers. We look forward to 24/7 farmers market containers.

Quick Facts
Plant Culture Systems

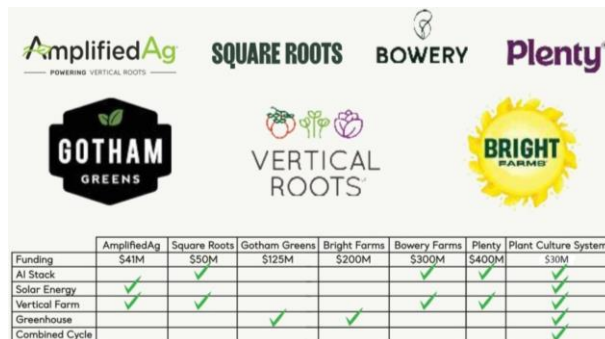
Sanjay Kumar Rajpoot, CEO

7661 Irvine Blvd.
(949) 418 3274
sanjay@plantculturecorp.com

plantculturesystems.com

Industry: Agriculture
Web: plantculturesystems.com
Bank: Grasshopper Bank
Law Firm: Cooley
Number of Employees: 7
Leadership Team:
CEO, Sanjay Kumar Rajpoot
CSO, Johann Heinrich Lieth PhD
Current Round: \$5M >50% in
Current Investors
\$375K Angel
Founders, Cooley Fund, Andy Mutz, Marcy Simon, Jacob Lovenskiold, Margaret Wong, Jerry Mix, Drew Schiff
Use of Funds:
\$1.3M Farm Real Estate
\$1.7M Vertical Farms
\$1M Salesfronts
\$500K Engineering
\$500K Overhead
Auditor: MyStartupCFO

Competition: We will beat EVERYONE in our market 😊



Financial Projections (Unaudited):

	2022	2023	2024	2025	2025
Revenue	2000	\$6,000,000	\$25,000,000	\$100,000,000	\$1,000,000,000
EBIT (dollars in thousands)	0	1,800,000	10,000,000	\$50,000,000	\$400,000,000

We enable businesses to grow using artificial intelligence & machine learning without fear of regulators and lawsuits. We do this through software that detects, explains, and removes discrimination and bias from their AI & ML models.

Company Background: SolasAI spun out of the leading algorithmic fairness consultancy BLDS, LLC in April 2022. SolasAI is the software development and AI consulting business. We provide software to the large banks, insurers, healthcare providers, and fintechs. We booked \$560K in licensing revenue since April 2022. One Fortune 100 health insurer and one large fintech are fully operational and using the software independently.

Leadership Team: Our chairman, Dr. Bernard Siskin, created the algorithmic fairness methodologies in the 1970s for employment, and then in the 1990s updated them for banking. He advises major corporations, law firms, and court systems. Our CEO, Nick Schmidt, figured out how to make this work in AI & ML models. Larry Bradley and Eric Peacock bring over 25 years in the software and analytics industries serving the payments, insurance, banking and healthcare industries. The team has been part of 5 exits.

Products/Services: We provide the only end-to-end, industry agnostic solution for detecting and removing discrimination and bias from customer models. We make it easy for the customer's modelling team to quickly test for and mitigate problems without disrupting their current processes. We also do not require use of proprietary or architectures or models.

Technologies/Special Know-How: No other company possesses the proven, court & regulator trusted methodology and 45 years of experience that is built into SolasAI. There are two key pieces of intellectual property built into the software. First is how we use Explainable AI to understand both the bias and quality of the customer's model, and then use that to jumpstart our search for fairer alternatives. The second is how we created our AI to optimize across multiple variables. We have a patent pending on our proxy detection method.

Market: Our market and category definitions are emerging, fragmented, and growing quickly. We cut across AI Governance, Explainable AI (XAI), ModelOps, and AutoML. Together these make up a \$19.2B market in 2025 with ModelOps and AutoML growing at 40% & 46%.

Distribution Channels: Our business model has three components:

- 1) Free tier of bias testing module.
- 2) Long-term subscription where the customer licenses seats or number of models for an extended period (i.e., 1 or more years.) sold either directly or through partners such as AWS.
- 3) Algorithmic Compliance as a Service (ACaaS) where software and experts are provided to the customer/partner. Often provide this through law firms under attorney-client privilege.

Competition: Currently Gartner and other analysts look at our market as very fragmented with no clear leaders. There are lots of plans and early products, but no clear product leadership. This includes areas of algorithmic fairness and adjacent technologies such as XAI, ModelOps, and AutoML. Key competitors include: Zest.ai, Fiddler, FairPlay, Stratyfy, DataRobot. Additionally, few of our competitors provide an end-to-end solution like we provide, or they provide this for a specific business function and trap the customer in a proprietary model.

Financial Projections (Unaudited): Fiscal Year begins July 1

	2022	2023	2024	2025	2026
Revenue	\$282,264	\$3,393,969	\$14,509,564	\$31,462,173	\$59,596,208
EBIT (dollars in thousands)	(\$122,426)	(\$820,487)	\$1,987,365	\$15,182,918	\$40,729,918

Quick Facts

Company Name: SolasAI, Inc.

Contact: Larry Bradley

Address: 1608 Walnut St., Philadelphia, PA 19103

Phone: 703-943-8150

Email: larry.bradley@solas.ai

Website: www.solas.ai

Industry: Banking, Insurance, Healthcare

Domain: Artificial Intelligence / Algorithmic Fairness

Bank: JP Morgan Chase

Law Firm: GrowthCounsel & Morgan Lewis

Patent Estate:

Number of Employees: 10

Leadership Team:

Dr. Bernard Siskin (Chairman)

Nicholas Schmidt (CEO)

Larry Bradley (COO)

Eric Peacock (CTO)

Financing Sought: \$1M

Current Investors: Friends & Family

Use of Funds: Sales & Marketing

Auditor: Rosenberg Chesnov



STACKCARE

AI driven spatial awareness, mapping, data science, and notifications in senior care

Growing Market

- “Silver Tsunami” - Senior care market increasing thru 2050
- Ongoing caregiver shortage without solution
- Increasing costs of care

Product

- Infrared motion sensors track and learn individual behavior and activity patterns
- Proprietary data science algorithms combine with push notifications providing real-time alerts of potential health and wellness issues
- Innovative solution to caring for seniors aging in place

Traction

- Multiple national partnerships building with Home Care Agency groups/providers
- Long-term contracts with Senior Living Communities
- Telehealth integrations

Starting To Scale

- Product development complete, scales easily
- Subscription model (Hardware + SAAS)
- Sales/Service function needed to onboard incoming clients



See our virtual resident by downloading StackCare app and using the following credentials:

Email: demo@stack.care
password: Demo@2022!

Passive Infrared
No Cameras, No wearables
Visit: <https://stack.care>



Contact: Nigel Mould - CEO
Email: nigel@stack.care
Cell: (941) 400-0548



Sunset Technologies, Inc. dba Noni

Tom Ervin
 8577 Sudley Road, Ste D
 Manassas, Va 20110
 703.915.0434
 tom.ervin@sunsettechnologies.it

**December 2022****Management:***CEO – Tom Ervin***Industry:** *LegalTech***Current Team:** 4**Bank:** *Bank of America***Law Firm:** *Wilmer Hale***Amount of Financing Sought:***\$750k***Raised to Date:** *\$100k***Use of Funds:** *Customer Acquisition & Success*

Business Description: Noni is revolutionizing the convergence of Estate Planning and Digital Asset Management. We provide technologies and services to plan and manage Digital Assets of your Estate – the “Digital Estate”.

Company Background: In the past 25 years, advancements in technology have spawned a new classification of estate assets - The Digital Asset. The inherent nature of digital assets, primarily their privacy, public anonymity, and sheer volume are creating problems for consumers in planning and managing digital assets for their estates. Noni solves these problems.

Management: Noni’s team has over 100 years’ experience in technology-based business, 3 exits (2 as founders) and is well balanced to scale the Company to the next level.

Tom Ervin leads a diverse team of professionals as CEO. Prior to founding Noni, he founded eAgree, a contract management platform which sold to SocialAtom.

Products/Services: You have thousands of digital assets (your phone, computer, electronic files & online accounts). What would happen to these assets if something happened to you? Noni allows you to plan and manage what should happen to your digital assets and who should manage them in case of your death or incapacity securely and privately. If a life event occurs, Noni verifies the event and then securely distributes your final instructions to one or more of your appointed fiduciaries to carry out your final wishes for your Digital Estate. Noni can also serve as your personal fiduciary for online accounts that you wish to have closed, relieving this burden from your loved ones. [See overview video here.](#)

Noni works with all existing Estate Plans

Technologies/Special Know-how: Recent legislation passed enables a user to direct what should happen to their digital assets if they die or become incapacitated via an online tool (RUFADAA). Noni is one of the first solutions to exploit this legislation. The Company has filed a provisional patent with the USPTO.

Market: Digital Estate Protection is a \$20b TAM in the US with over 100m users as the average consumer has over 100 online accounts and many other digital assets to manage. Targeted demographic is ages 25-54, parents, business owners - consumers who purchase life insurance. Noni is sold on a recurring subscription model.

Distribution Channels: Noni is distributed through insurance brokers who offer Digital Estate Protection as an add-on to life and health insurance policies to consumers (BtoBtoC). The Company went to market in Q422 and has gained traction with all brokers engaged with reach a of over 10 million end-users.

Competition: Unlike planning tools for traditional estate assets, Noni is the only solution on the market today that is purpose-built to address Digital Assets of the Estate. Traditional Estate planning tools include GoodTrust, Trust&Will and many others.

Financial Projections (Thousands)

	2023	2024	2025	2026	2027
EoY ARR	\$ 984	\$ 5,890	\$ 13,282	\$ 31,219	\$ 48,596
Revenue	355	3,851	11,556	28,875	43,312
EBITA:	(385)	(525)	1,762	9,858	15,159



Value Proposition;

Weavy is poised to revolutionize the way developers and product teams innovate and build software.

Company Background: Weavy delivers a low-code API & SDK that helps developers and product teams (a \$600b market) to save time and resources by providing high-value productivity features that can be added up to 14x faster to any app.

Leadership Team:

CEO & Co-Founder Rickard Hansson - Leading product teams for over 25 years – founded 4 prior software companies with successful exits

Financial & Co-Founder Alex Grüner – Leading financial teams and companies for over 40 years, startup investor, etc.

CTO – Linus Birgerstam – Working as a CTO for 20+ years, been CTO for all of Rickard Hanssons’ prior ventures

CMO – Lydia Nicoll – 10+ years of experience in B2B SaaS growth and acquisition strategies.

Products/Services: Weavy is the only API & SDK on the market that’s cloud-agnostic and cross-platform – allowing us to deliver to industries no one else can including fintech, medtech, government, military, and more.

Our low-code API & SDK is the fastest on the market – it enables developers of any skill level to add high value productivity features to any app, up to 14x faster.

Technologies/Special Know-How: Weavy’s has a completely unique architecture with an agnostic backend that can be deployed anywhere – cloud or local - with a real-time layer connected to the frontend supporting several frameworks including JavaScript, Reach, Swift, and more delivered as Opensource repos to the product teams.

Market: Target market is the enterprise software industry (\$600bn in 2022) and developers (27m in 2022) – our business model is to charge per seat/month and product.

Distribution Channels: Inbound content marketing and CPC, GitHub, NPM, Nugets, and outbound enterprise sales – combined with marketplaces such as Atlassian Marketplace, and more.

Quick Facts

Company Name: Weavy
Contact: Rickard Hansson (rickard@weavy.com)

Address: 840 Apollo Street Suite 100, El Segundo, CA 90245
Website: www.weavy.com

Industry: Dev-tools

Bank: F&M
Law Firm: White & Summers

Number of Employees: 13
Leadership Team: 5

Amount of Financing Sought: \$3m (\$1.35m secured)

Current Investors: Atlassian Ventures and more

Use of Funds: Growth

Competition: [Sendbird](#), [Stream.io](#), [PubNub](#) – we focus on B2B and enterprise software with a complete suite of features – Chat/Messenger, Feeds, File Sharing and Document Collaboration – and we do so uniquely.

Financial Projections (Unaudited):

	2022	2023	2024	2025	2026
Revenue	\$320,000	\$2,669,296	\$15,278,389	\$81,926,342	\$324,104,510
EBIT (dollars in thousands)	-\$1,598,284	-\$1,683,952	-\$2,511,023	\$26,964,297	\$141,800,460

PARTNERS



MODUS CREATE @ModusCreate

Modus Create is a consulting firm that helps companies transform for success in the digital future. Through a collaborative engagement model, we help our clients with product strategy, application design/build, user experience, and process change.



PAT SHERIDAN, CO-FOUNDER & MANAGING PARTNER, MODUS CREATE

Pat is focused on the intersection of design, technology, and business. He saw the need for a high-end product consulting firm built with open-source team design and the concept for Modus was born. Pat helps clients see new ways to tackle challenges with emerging technology and brings his unmatched passion to work every day. As a serial entrepreneur and active startup mentor, he's a co-organizer of NoVa.JS and NYC.JS. He is a 2011 graduate of Mind Share, received his MBA from Georgetown University, where he is currently an Entrepreneur-in-Residence, and holds a BFA from the Corcoran College of Art and Design, where he currently serves as an advisory council member for the George Washington University Columbian College of Arts and Sciences.



NEMPHOS BRAUE

Nemphos Braue co-founders George Nemphos and Tim Braue left big law firms in order to practice the law differently. Nemphos Braue offers big firm experience with boutique-level service, becoming true strategic partners with their clients and helping entrepreneurs and emerging companies grow further and succeed. Repeatedly honored by The Daily Record as leaders in law and as the best law firm for mergers and acquisitions and intellectual property, Nemphos Braue has experience in private equity, venture capital and with independent sponsors, and in industries ranging from healthcare, cannabis and technology to manufacturing, real estate and consumer goods. See why Nemphos Braue is a different kind of law firm at nemphosbraue.com



GEORGE NEMPHOS, CO-FOUNDER AND MANAGING MEMBER, NEMPHOS BRAUE

George Nemphos is a founding member of Nemphos Braue, a Mid-Atlantic boutique law firm representing entrepreneurs, start-ups, emerging and mature companies, as well as venture capital and private equity funds. He has extensive experience working with private equity to lead M&A deals including spin-offs, roll-ups, minority interest acquisitions and joint ventures, as well as advising in capital raising efforts, and supporting entrepreneurs to grow and scale their businesses. George holds an LLM from Georgetown and a J.D. from the University of Baltimore. He volunteers at St. Paul's School for Boys, was on the Executive Leadership Committee for the 2019 and 2021 American Heart Association Heart Ball and serves on the Board of Directors for Driving Force Group and the Maryland Business Innovation Association.

NEXT powered by SHULMAN ROGERS

NEXT disrupts the legacy legal industry by offering a broad range of fixed fee solutions (stand-alone products and annual legal plans) delivered by senior attorneys with valuable business expertise. NEXT solves the problem that startup and emerging growth companies face when launching their business as well as scaling: lack of access to predictable legal fees, seasoned attorneys, the latest technology and key business services. We use cutting edge technology platforms to deliver real efficiencies, transparency and a collaborative environment for clients, attorneys and investors. NEXT partners with its clients to de-risk their business and get to the NEXT level, together reaching each milestone of success.

NEXT is powered by Shulman Rogers, a full-service law firm with nearly 100 attorneys offering superior service across a wide range of practice areas. The firm also offers robust personal services such as residential closings and trust and estate planning. Shulman Rogers has earned its reputation for providing quality representation, business insight and client value, serving as a highly attractive alternative to larger, higher-priced firms and smaller, less diverse firms. Learn more at ShulmanRogers.com.



PARTNERS



ANTHONY MILLIN, NEXT CHAIR & PARTNER, SHULMAN, ROGERS

Anthony Millin is the Chair of NEXT and a trusted legal and business advisor to startup, early-stage, and emerging growth companies. As a corporate and securities attorney, a successful serial entrepreneur, and a venture capitalist, Anthony brings a unique legal and business perspective to advising his clients. Anthony understands firsthand what it takes to start, scale and manage a company, to successfully prepare for and run a fund-raising process, and to address the legal issues faced by a startup. Another specialized skill set Anthony brings to the table is his China-based experience, assisting early-stage and middle-market companies interested in conducting business in China or seeking direct foreign investment from China. Anthony also serves as a Venture Partner at Urban Us, a seed-stage VC firm. Contact Anthony at amillin@shulmanrogers.com.



STELLAPOP @StellaPop

We build better businesses. Helping organizations improve their operations, people and brand. Like the brain, StellaPop's capabilities are divided into two halves: management and creative consulting. We specialize in functions within each while maintaining a deep understanding of how one affects the other. We know that within every company, the two sides must work together seamlessly to drive success.

We're in the "creating solutions for your business" business. With tailor-made answers, we accelerate growth, expand markets, streamline operations, leverage technology, and activate brands. Our marketing expertise serves a diverse range of industries including public, private, manufacturing, retail, financial, science, medical, pharmaceutical, engineering, aerospace, real estate, education, and not-for-profit.



ANGIE O'GRADY, COO, PARTNER, STELLAPOP @angieogrady

As soon as my feet hit the floor in the morning, I'm running full speed, and that's the way I like it. I spent 15 years as employee number one, the President and COO for Carr Workplaces, building it into a 30 location multi-million dollar business. Before Carr, I spent 14 years at HQ Global Workplaces, now known as Regus. I was co-working when coworking was executive suites, and now I'm leading the charge into 2021 as the industry innovates to a more flexible office concept. In January 2015, I decided to join my husband, Mike, as a partner and thought leader on the business management consulting side. StellaPop's primary focus is assisting client CEO's in improving their people, operations, brand, and bottom line.



AEG @enterprisegrowth

AEG is a growing and profitable company that provides elite business advisors and midmarket CEOs unprecedented business development and peer-to-peer networking opportunities through an ecosystem of city-based communities. Deliberate culture and technology create deep personal relationships to drive fast and efficient business referrals that accelerate business development and growth for these advisors and CEO peer groups.



MARK HAAS, CEO, AEG @MarkHaas

Mark Haas is Co-founder and CEO of AEG (Association for Enterprise Growth), responsible for strategy, operations, and expansion of its communities to 30 cities nationally. He was previously President of ROM a strategy and operations management consulting firm, advising CEOs and boards to include leadership training for Tanzanian energy executives, developing curricula to train consultants in 40 countries for an international bank, crafting strategy and innovative business models for \$120 million nonprofit, merging two scientific associations, re-organizing a biomedical research agency, facilitating development of WWIV military strategy, and of facilitating a global R&D strategy for the US Navy.

PARTNERS



TRUIST WEALTH MANAGEMENT

Truist Wealth Management has a commitment to helping our clients manage their wealth and achieve their goals. We build and continually strengthening long-term relationships by offering you comprehensive wealth management capabilities to meet your sophisticated and often complex needs. As your needs evolve, your team of experts and solutions will too, in order to address new challenges and opportunities.



CHRISTOPHER ROSS, MANAGING DIRECTOR, TRUIST WEALTH MANAGEMENT

Chris Ross is a Wealth Advisor with Truist Wealth Management. He offers clients more than 25 years of comprehensive wealth management experience. Chris leads a team that brings together specialists in investments, financial planning, credit, and estate strategies. He is a native of Baltimore and lives in Annapolis with his wife Jennifer and two children. Chris is a graduate of Salisbury University with dual degrees in Economics and History. He received his MBA from the College of William & Mary and has completed post-graduatework at The Johns Hopkins University.

REFRACTION @refractionpt

Refraction is a leading nonprofit innovation hub in Northern Virginia, that provides mentoring, programs, and office space for startups and high-growth companies to help create jobs in the greater Washington region. In five years, more than 300 member companies have collectively raised over \$350 million in capital. Refraction's partners include Amazon, Cox, Dominion Energy, MITRE, Fairfax County, Arlington County, Loudoun County, Virginia Innovation Partnership Corporation, and Virginia Tech.



ESTHER LEE, PRESIDENT & CEO REFRACTION @eeeclee

Esther Lee is the President and CEO of Refraction, a technology innovation hub in Northern Virginia, focused on fostering innovation and entrepreneurship by nurturing and mentoring startups and high-growth companies. Prior to joining Refraction, Esther served as Secretary of Commerce and Trade for the Commonwealth of Virginia, where she oversaw 14 state agencies. In that role, she led Virginia's successful bid for Amazon's second headquarters (HQ2).

Esther has also served as Global Chief Marketing and New Business Officer at Burson-Marsteller, a leading global strategic communications firm, advising major clients like Samsung, Coca-Cola, and Marriott. In 2009, President Barack Obama appointed Esther as Senior Policy Adviser to the U.S. Secretary of Commerce. She created and led the Office of Innovation and Entrepreneurship and the National Advisory Council on Innovation and Entrepreneurship. She also launched the White House "Startup America" initiative and the Presidential Summit on Entrepreneurship.

DINGMAN CENTER FOR ENTREPRENEURSHIP, UNIVERSITY OF MARYLAND @UMD_Dingman

The Dingman Center for Entrepreneurship is a top-tier entrepreneurial institute recognized around the world as a leader in enterprise creation. The Dingman Center is continuously pushing the boundaries of teaching and learning with its focus on practical entrepreneurship, global innovation, and international classroom experiences. The Center promotes opportunities that provide maximum resources to start-up businesses in terms of ideation, execution, and financing; and that support its mission to take entrepreneurs "from the back of a napkin to the first \$1 million in financing."



KEIRETSU



FORUM

KEIRETSU FORUM @KeiretsuAngels

Keiretsu Forum is a global investment community of accredited private equity angel investors, venture capitalists, and corporate/institutional investors. Keiretsu Forum was founded in the San Francisco East Bay in California in 2000 by Randy Williams. Keiretsu Forum is a worldwide network of capital, resources, and deal flow with 53 chapters on 3 continents. Keiretsu Forum members invest in high-quality, diverse investment opportunities.

PARTNERS



FITCI - FREDERICK INNOVATIVE TECHNOLOGY CENTER, INC @FITCInc

The Frederick Innovative Technology Center, Inc. (FITCI) is a business incubator and accelerator designed to cultivate entrepreneurship in Frederick, Maryland. FITCI specializes in the strategic business support of local entrepreneurs in the early stages of mostly science and technology-based businesses: Biotechnology, Information Technology, Renewable Energy, and Cyber Security. FITCI currently has two locations in Fredrick, MD, and 52 client companies.



THE BALTIMORE ANGELS @baltimoreangels

The Baltimore Angels is an angel investor group based in Baltimore, MD. Founded in 2009, its mission is to invest profitably in the regional entrepreneurial ecosystem and advance early-stage innovators to the next stage of capital formation. Its vision is to be the most trusted resource for angel capital investment and entrepreneurial mentorship in the Greater Baltimore region. A new generation of angel investing comes to Baltimore. If you are a tech entrepreneur or community-minded investor, please be in touch with Baltimore Angels. This is not your father's (or your uncle's) investment group.



STARTUP GRIND-COLUMBIA, MD @StartupGrindDC

Startup Grind-Columbia, mid-Maryland Chapter is part of the largest global community for innovation, entrepreneurship, and the startup community. We're actively educating, inspiring, and connecting more than 2MM+entrepreneurs, 600+ cities, and 130+ countries. We nurture startup ecosystems through mentorship, advisory services, education, inspiration, access to capital, and most importantly, connecting members with the resources we need to have the best opportunity to grow phenomenally successful ventures.



ANGELS + LIFE.SCI INVESTORS

Formed in 1996, the Angels + Life.Sci Investors Network is organized under NJAngels.net. We are a manager-led, loosely organized network of investors and accredited Angels, Coaches, and Experts who Sponsor world-class Entrepreneurs. Our colleagues have deep experience and technical domain expertise in all of the life sciences disciplines in which we are involved, including nanobio tools, materials, and devices: tele-diagnostics, augmented healthcare & remote patient monitoring, automation and robotics, & advanced chemistry for drug discovery.



GEORGETOWN ENTREPRENEURSHIP INITIATIVE

Entrepreneurship is one of the world's most powerful forces for positive change. Georgetown Entrepreneurship seeks to instill an entrepreneurial mindset in students, foster an entrepreneurial culture across the university, support the successful growth of alumni ventures, and leverage the power of entrepreneurship to make an impact in the world beyond Georgetown.



JEFF REID, FOUNDING DIRECTOR, GEORGETOWN ENTREPRENEURSHIP INITIATIVE, GEORGETOWN UNIVERSITY'S MCDONOUGH SCHOOL OF BUSINESS @Hoyapreneur

Jeff Reid is the Founding Director of the Georgetown Entrepreneurship Initiative and Professor of the Practice of Entrepreneurship at Georgetown University's McDonough School of Business. Reid is a catalyst for entrepreneurship and a well-known leader in entrepreneurship education. In 2009, Reid launched the Georgetown Entrepreneurship Initiative to catalyze entrepreneurial thinking and activities across Georgetown University and impact the growing DMV startup community. Previously, Reid founded UNC's Center for Entrepreneurship and grew it to a No. 1 national ranking by Forbes & Princeton Review, and was chosen by his peers and Entrepreneur magazine as one of the top five entrepreneurship center directors in the United States.

PARTNERS



RYAN & WETMORE, P.C. @RyanWetmorePC

Ryan & Wetmore is a full-service accounting and management consulting firm, servicing the Northeast/ Mid-Atlantic region since 1988. What makes us different from other accounting firms is our proactive approach. We work hard to earn our clients' confidence by encouraging open communication year-round. This approach has enabled us to help clients become more efficient, more competitive, and more profitable. Through our numerous management engagements, we have become trusted, unbiased advisors.



PETE RYAN, CO-FOUNDER & PARTNER, RYAN & WETMORE

Pete co-founded Ryan & Wetmore in 1988, a 3 office, 35-person firm serving the Mid-Atlantic region. He currently works with clients to address tax, audit, and accounting issues. He also has significant experience in international tax matters and business consulting services. His expertise extends to Healthcare organizations, Construction and Real Estate, Government contractors, Technology, Manufacturing, and High Net Worth Individuals. Pete has served on the Board of Directors for several organizations. He is an active member of the Healthcare Advisors Association, the Real Estate and Construction Association, the CPA Manufacturing Services Association, the Virginia Transportation Construction Alliance, and the Construction Financial Management Association.

December 21st Attendees As of 12 21 22

SPEAKERS			
First Name	Last Name	Title	Company
Tien	Wong	CEO	Opus8, Inc.
Chris	Nicosia	VP of Partnerships	Modus Create
PRESENTERS			
First Name	Last Name	Title	Company
Rachel	Zayas	Founder & CEO	AGED Diagnostics
Yvonne	Bokelman	CEO	Alyve Medical Inc.
Sanjay	Kumar Rajpoot	CEO	Plant Culture Systems
Larry	Bradley	COO & Co-Founder	SolasAI Inc.
Nigel	Mould	CEO	StackCare
Tom	Ervin	CEO	Sunset Technologies, Inc dba Noni
Rickard	Hansson	CEO & Co-Founder	Weavy
ATTENDEES			
First Name	Last Name	Title	Company
Michael	Adler	Managing Partner	Law Office of Michael E. Adler
Nayyar	Afridi	Sr. Manager, Strategic Partnerships	KiwiTech LLC
Yair	Agami	CMO	Bo and Bo
Mark	Ajamian	Director	Bank of America
Lama	Al-Aswad	CEO	Visi Health Technologies
Emily	Alcorn	Associate	CBRE, Inc.
Stephen	Alexander		University of Maryland
Brian	Alexander	President	Omina Technologies
Alex	Alexanian	CEO	Blissera Corp.
Roberto	Alfaro	CEO	G1 Ophthalmics
Scott	Alford	COO	Oraclum Capital LLC
WD	Allen	Adjunct Professor	University of Missouri
Omar	Amjad	Former Venture Analyst	
Bill	Anderson	President	Generations Advisors
Michael	Antone	Of Counsel, U.S. Registered Patent Attorney	Nemphos Braue
Paul	Armijo	President & CEO	Armijo Innovations LLC
Ritu	Arora	Product Owner	Mercurius Inc
Farzin	Arsanjani	GM	Hyperoffice
D.	Arthur	Founder	FC, Inc.
Millan	Ash	CEO	TLT
AJ	Attavar	CEO	Neptune Products & Services, Inc
Stephen	Auvil	Chief Program Operations Officer	Maryland TEDCO
Bevely	Awuor		Georgetown University
Gavin	Aydelotte	EOD Officer	US Army
Jogesh	Bagga	Founder & CEO	Digivaxc Inc.
Arun	Bahl	Founder	Aloe
Rick	Bain	Principal	ReCreation
David	Bain	Executive Director	INCITS
Daniel	Ballin	Chief Executive	Ideas Crucible
Tom	Bascom	Director	Addressable Corporation
Kyle	Bayliss	Managing Director	MDSBDC
Jim	Beals	COO	CoolWaters Technology
Jay	Beam	Managing Director	Adasel Global Partners LLC
Tash	Benjamin	PR Consultant	TKing Enterprises
Abhishek	Bhatia	CTO	Rajasavi Tech
Manoj	Bhumbhaliya	IT Consultant	Hidden Brains Infotech Pvt. Ltd.
Randy	Blake	Principal	Duncaster Investments
Richard	Bodson	President & CEO	SysNet Technologies, Inc.
Tierra	Bonds	CEO	Take Charge Credit Consulting
Jill	Bondurant	Director of Marketing & Communications	Nemphos Braue
Clay	Booma	GAM	SnapLogic
Roosevelt	Boursiquot	CEO	NoayoTech
Steve	Boyd	CEO	New City Energy
Kathryn	Breisch	CEO	GoPursue
Corinne	Brion	Professor	University of Dayton
Richard	Bristol	President	Bristol Advisory LLC

Doug	Brown	Principal	DAB Holdings LLC
Nick	Buchanan	CEO	Blockperfect
Monya	Bundy	Executive Ops Coordinator	Paul PCS
Bethany	Burk	Chief of Staff	American Academy Of Family Physicians
Greg	Burton	CEO	UBSports Inc.
Fabio	Caironi	CEO & Founder	ByteNite
Anthony	Cammarata	Outsourced CFO	Startupcannon
Robert	Cantrell	Patent Agent	Strategy Innovators LLC and Jimenez Law
Joe	Carlin	Principal / Private Investor	JonXeone Capital
John	Carrieri	CEO	Energy Cloud Inc.
Vizma	Carver	President	CGHG
Mario	Casabona	Founder and Managing Director	Casabona Ventures LLC
Benjamin	Cassou	CEO	ReStalk
Sam	Chan	SVP	US-Asia Links, LLC
James	Chan	Tech Eng Lead	ENG
Amrish	Chandra	Prof	AIP
Tahjia	Chapman	Editor-in-Chief	TDK Media Publishers
Diana	Chavez	Marketing Director	TechAID Solutions
Rene	Chaze	Partner	Tiny Orange Capital
George	Chen	Principal	Nautilus Venture Partners
Chris	Chen		
Anthony	Chernykh	IR Manager	Chupanov Family Fund
Melinda	Chu	CEO	Venja Health
Nicholas	Ciantra	Senior Advisor	Noni Digial
Angela	Clark	Co Founder	Farm and Fish for Life
Joseph	Clayborne II	Entrepreneur	
Kasem	Coleman	President	Content Chunk, LLC
Brian	Colsell	CEO	Cheqbook
James	Colthart	COO	EnerSysNet US Holdings Inc
Ivan	Comerma	Partner	Systemacapital.com
Jim	Cook	GM	Cook's Outsourcing Network LLC
Camilo	Correa	Co-founder & CEO	Water Adventures
Alfredo	Cortes	Senior Director - Client Relations	Regulatory Compliance Associates, Inc.
Marie	Crivaro	Financial Services Professional	MassMutual
Betsua	Cuevas	Co-founder	NovaLingua Academy
Daniel	Darlak	Producer	Break The Floor Productions
Bill	Davis	Founder & CEO	BeachNecessities.com
Nathalie	De Vazeille	VP Marketing and Business Development	Stack Labs
Hank	Dearden	Principle	Group 3D
Gabriel	DeChristo	Founder	Swish Gaming
Faith	DeFreitas	Senior Manager	ConcertAI
Hector	Del Castillo	Chief Product Officer	Byond
Ryan	DePirri	Associate	Corstone Capital
Mark	Derzon	President	Gstnd
Heidi	Diamond	CEO	Diamond Enterprises
Frank	Dickson	Director, Strategic Initiatives	Maryland Department of Housing
Debbi	DiFeo	Comptroller	Venture Practice Services
Danjella	Dragas	CEO	The Lending Corporation LLC
Vladimir	Drogan	CEO	Roonyx
Subramanyam	Dronamraju	Founder, CEO	Essert Inc.
Marisue	Drumm	Business Outreach Specialist	Vilas County EDC
Curt	Drumm	President	Lakeshore Aviation
Yulia	Druzhnikova	Co-founder	FIXAR
George	Dubec	Consultant	Ultimate Networking
Danny	Duong	General Partner	Cross Ocean Ventures
Mark	Eaton	CEO	Stellarray, Inc.
Kelly	Echols	Founder	LeVanta Tech LLC
Yaniv	Efi	CMO & Investor Relations	NoteFlow
Yakov	Elizarov	CEO	Elizarov Consulting Group, LLC
Carol	Ervin	Writer	Ervin Endeavors
Idong	Essiet-Gibson	Principal	The Idyeas Group
Michael	Faught	Managing Partner	Technology Capital Partners
Richard	Faulkner	CEO	IQ Exchange LLC
James	Feng	Partner	MSA Capital
Emily	Fenush	Social Media Intern	CONNECTpreneur
Jeff	Filipski	Principal	Sales Alliance
Eliane	Fiolet	Co-founder & Editor	Ubergizmo
Dwight	Fischer	Founder	Covenant Group
Angie	Fontaine	CEO	De La Fontai
Cindy	Fraley	Executive Assistant	Keiretsu Forum Southern California
Kandra	Frane	Account Manager	Xceptional
Martin	Fredrickson	Executive Advisor	Reisende Partners
Nathan	Fu	Engineer	The Human Diagnosis Project
Dorothy	Fulop	Camp Director	Pitchcamp Agency
Janette	G	Fractional CFO	Vitta Solutions

Anthony	Gabrielian	Founder	Green Knott
Robert B.	Gahagan	Chief Success Officer & Founder	CCSI - Corporate Consulting Services, Inc.
Phil	Gallagher	Founder	Taziot
William	Galle	Principal	DPS
Gabrielle	Garcy	Founder	GERI GABI
Efi	Gershon	CEO	Noteflow
Gregory	Giammittorio	Partner / Angel Investor	Potomac Law Group
Ellie	Giles	CEO	Virtual Apprentice
Candace	Gill	Director of Business Development & Client Services	Nemphos Braue
Kirk	Giminez	Founder	KG Productions DBA Xizzle TV
Chris	Golden	Partner	Sterling Select Group
Eli	Gordon	Founder	Hustle & Trust Ventures
Yuying	Gosser	Research Assistant professor	City University of New York
Jeffrey	Graber	Researcher	MITRE
Richard	Greene	CEO	RGA - Israel & U.S. Strategic Relationships
John	Gregg	CEO	BalinBac Therapeutics, Inc.
Yianna	Grekas	Operations Director	The Purple Element
Cherie	Griffith-Dunn	President/CEO	CGD LLC
Andrew	Grub		
Yulia	Gufranova	CEO	FILM24.US
Aaron	Gunn	CEO	Aeris Biotech Inc.
Air	Gustafson	Founder	Morty's Bark & Brew
Anne	Haack	CMO	Cool Content Biz
Margaret A.	Hailemariam	CEO	Margaret & Co.
Fizie	Haleem	Business Solutions Manager	Montgomery College
John	Hall	CFO	Notal Vision
Tiffany	Hamilton	CEO	Victor Wear LLC
Malcolm	Handelsman	Director	Active Angels Network
Lee	Haney	Board Member	Farm and Fish for Life
Michael	Hanson	Growth Strategy Consultant	Optimum Dynamics LLC
Leila	Hardy	Founder & CEO	Forcefield
Tawanna	Hardy-Ventress	Small Business Coach	GO.BE.
Jamal	Harrison	Director	Sunset technologies
Qaizar	Hassonjee	Managing Partner	Angel Star Ventures
Chris	Havener	President/Americas	Richmond Liquidity Management
Nicole	Helgeson	PM	NAB
Andrew	Hendela	Co-founder	Karambit.AI
Browning	Herbert	Managing Director	Ringbolt Capital
Parker	Hershberger	Investment Analyst	Charmides Capital
Stephanie	Hessler	Principal	Stephanie Hessler Coaching
Bennett	Hickey	Associate	LPC Tenant Advisory
Colin	Hickmon	Founder	Own It Social
Todd	Hinson	Founder	Opertivo
Joy	Hoffman	Project Manager	Maryland Tech Council
Rich	Holloman	Founder	Mobodyne LLC
Reaz	Hoque	CEO	SYNERGY Consulting
Mike	Hoyman	Co-Founder	EmailsAndSurveys
April	Huang	Founder	Martecana, LLC
Bill	Huber	Of Counsel	Nemphos Braue
Mohamed	Hussein	CEO	PGLS
Paul	Iacovacci	CEO	Enascor Capital
Jenny	Ibrahim	Director & Advisor	OPOL
Dhan	Iyer	Director	SGPMCS
Dave	Izuka	Consultant	Venture Acceleration Services
Andy	Jacques	COO	Synergy Consulting
Dhruv	Jain	Business Development Executive	Hidden Brain
Jennifer	Jenkins	Founder	Success Braids and Nails
Twanna	Jones	Director of Procurement	JustOne Solutions LLC
Joy	Jones	CAO	DDL
Desiree	Jones	Business Process Consultant	Allied Consulting Solutions, LLC
James	Joseph	CEO	ELATED, INC.
Michele	Joseph	CEO	SGAP Leaders
Jung	Jung	Partner	Techcrowder
Shoshi	Kaganovsky	CEO	RingOn
Kunjan	Kakkar	Sr Associate	KiwiTech
Nader	Kalkhoran	Founder & CEO	Kalnar Technologies LLC
Nina	Kamanová	Investor Relations & Partnership Management	Danube Angels
Alexandra	Kapelos-Peters	Founder	Cansulta
John	Kaufhold	ML Startup Founder, Advisor	Deep Learning Analytics
Bill	Kaupp		University of Maryland
Lori	Kavle	Managing partner	BDM Collective
Ron	Kazel	Principal	Kalliam Capital
Erika	Keough	CEO/Founder	Le Breton Group
Alvin	Kersting	CEO	Portfolio Operating Partners
Toska	Kim Anh	Partnership Manager	WEALLNET

Jennifer	Kirkland	COO/CFO	Care Constitution, LLC
Bernard	Klocman	CEO	Emergent Healthcare
Ted	Koblick	President	Koblick Consulting
Hakan	Kocabas	Drone Developer	Cesis Arge Technology Ltd.
Martin	Koev	Manager	Koev Brothers
Nick	Kovacic	Managing Partner	Nicholas Companies LLC
Theresa	Kramer	CEO/CMO	OcuFLOW
Sathish	Kumar	Chartered Accountant	SBSS & Associates
Neeraj	Kumar		Babson College
Denyzio	Laboy	CEO- Co-founder	PenUin
Norman	Lai	CTO	US Medigene
Corie	Lalonde	Gormet Mushrooms	Funky Mushrooms
Michael	Lane	Chairman	Long Island Capital Alliance
Douglas	Laney	Innovation Fellow, Data & Analytics Strategy	West Monroe
Jeremy	Latchana	VP	VTMember
Bob	Leach	Business Advisor	Braintree Business Development Center
Terry	Leach	Founder & Architect	Astrolytes
Steve	LeBeau	President	NanoMAG LLC
Ines	LeBow	CEO/Founder	Enterprise Transformation Solutions
Jack	Lee	Managing Director	Marketing Integration
Aquila	Lee	Senior Associate	Chenel Capital
Datquan	Lee	President	EHLAI
Steven	Lehat	Principal	Regulatory World
Julianna	Lembeck	Founder	Taurus
Damien	Leon	Associate	Accidental Entertainment Inc.
George	Letscher	Principal	Swish IP
Joy	Levin	President	Allium Research and Analytics
Harry	Li	VP	Vcubics
Reneika	Lighthourne	Business Development	Advanta IRA
Toby	Lin	CTO	Cyber Skyline
Janice	Lindsay	Commercial Capital	JELCapital, Inc.
Eugene	Liu	CEO	VTRY INC
Andrea	Liu	IO	TLFO
Cody	Locke	Chief Innovation Officer/Investor	Center for Advancing Innovation
Tony	Lodge	Director of Policy	First Focus
Jacob	Lonsway	Event Manager	PitchForce
Daivd	Luff	Co-Founder	Deed Entertainment
Bruce	Mackler	Chairman of the Board	Ethicann Pharmaceuticals Inc.
Chintan	Mankodi	Manager - Business Development	Hidden Brains InfoTech
Patrick	Manning	CEO	Diagnostox
Craig	Marino	COO	Squadron Defense Group
Tara	Marshall-Hill	Founder & CEO	Sindano Health
Doug	Masi	Founder CEO	Float'n Thang
Austin	Mason	Co- founder	Quick kitty.com
Regina	Maspero	Entrepreneur Advisor	LaunchSA
TJ	Master	Technology Mentor	ICAP
Alex	Materukhin	CEO	DreamCatcher
Aditya	Maurya	Co-founder	Zelox Entertainment
Karla Fabiola	Mayo Sánchez		IPN
Navid	Mazloom		Dingman Angels
Raymond	McCarthy	Chief Executive Officer	Accountable Infrastructue Inc.
LaKendra	McClendon		Dasher
Sean	McColl	Managing Director	Trusted Business Advisors
Bradley	McConnell	Partner	FH+H
Lex	McCusker	Investor	George Washington University (Retired)
Christopher	McDonald	Private Equity Consultant	Paylocity
Teresa	McDonald	CEO	Ultimate Restoration Unlimited, Inc.
Brad	McGowan	Managing Director	Pickwick Capital
S K	Mehra	President	Think Management Inc
Mark	Mehrespand	CTO	Zagros Enterrises LLC
Brian	Melrose	Videographer	Freelance
Eitan	Merhavy	CEO	Bo and Bo
Julia	Michel	Insurance Advisor	BKS Partners
Loren	Minkus	Consultant	Concept Equity Group
Sonu	Mirchandani	Faculty	Etsu
Joe	Miscione	Managing Director	Providge
Kay	Mok	Senior Partner / Investor	Gobi Partners
Zack	Molnar	Finance Director	Safe Rx
Mike	Moore	CEO	MedWatch Technologies, Inc.
Godwin	Mordi	CES	GMF
John	Morgan	Managing Partner	Morgan Global LLC
Brenton	Moss	President	Directed Analytics
Rameeza	Mueen	CEO	Transparent Hands Foundation
Louis	Mulamula	Associate	JLL
Kevin	Mullenex	COO and Co-Founder	iotaBEAM, Inc.

Sean	Murphy	VP, Strategy	Alvye Medical
Pradeep	Nagachandran	CEO	Suvarna Partners
Tejash	Natali	Chief IT	Sunset Technologies
Sarfraz	Nawaz	Associate Director, Digital Product Management	Johnson & Johnson
Kevin	Neal	CEO	P3iD Technologies Inc.
Manquel	Neira	MD	Hope Printer
Anton	Neschadim	Senior Advisor	GreenSky Capital
Scott	Nevins	Principal	Bernstein Private Wealth Management
Doug	Nguyen	Founder	Hustlr inc
Cong	Nguyen-Dinh	VC	APX
Robert	Nipper	Owner	Nipper Family LP
Nicole	Nixon	CEO	Listing Central
Glenn	Noble	CEO	Proudly LLC
Paul	Nolde	Executive Managing Director	Lighthouse Labs
Kellie	Ohara	Founder	Empire Headhunters
Baba	Olaogun	Founder	FreeGas.com
Charlie	Oliver	CEO	Tech 2025
Julie	Olley	Venture Capital Analyst	Ben Franklin Technology Partners
Brian	ONeil	Controls Tech	
Jose	Ortiz	COO	Advantage Solutions Tech, LLC
Matthew	Otero	CEO	Compass LLC
Daisuke	Otsuka	MBA candidate	University of Maryland
Jess	Owens	Founder + CEO	Greenlist
David	Pachkofsky	Founder & CEO	Dapper Care, Inc.
Vladimir	Pakhomov	CBDO	HighPass
Marlon	Parker	Aspiring Entrepreneur	RBB Tech
George	Parrish	Head Deal Flow	Bay Angels
Samir	Patel	Data Architect	AWS
Chirag	Patel	CEO	Everestek LLC
Abel	Patt		Montgomery College
Elaine	Pavich	Co-Owner	Gym
Tom	Perkins	Director, Portfolio Development	Highlight Technologies
Valerie	Perlowitz	CEO/Founding Partner	IHC
William	Perlowitz	CTO	Leidos
James	Peterson	V.P. Small Business Ambassador	M&T Bank
Nikolay	Petkov	Founder	WEARE
Matthew	Philistine	Digital Marketing and Wealth Management	
William	Podd	President	Landmark Family Office
Mary	Pope	Business Consultant	LW Marketing
Sam	Popp	Founder and Photographer	Sam Popp Shoots
Jim	Porterfield	Owner	Acadaware, Venture Practice Services
Sheena	Prasad	Account Manager	Creative Blue
Jurgo	Preden	CEO	Thinnect OÜ
Joel	Price	Director of Product Innovations	Core Source Technologies, LLC
Renee	Price	Operating Manager	Mama Ethel's Herbal Infusions
Tina Guanting	Qiu	Consulting Chief Scientific Medical Officer	Ophthalmic Therapeutic Innovation
Richard	Rabbito	Director Generale	The Overseas Development & Finance Group
Richard	Rabbito	Director General	The Overseas Development and Finance Group
David	Radin	CEO	Confirmed
George	Radmilovic	CFO	Zimmersive4u
Mohammad	Rahman	Chief Marketing Officer	International Accelerator
Abdul Aziz	Rajab	GDP Consultant	RAJAB GENERAL TRADING LLC
Gopal	Rajaraman	Investor @LM Ventures	Lockheed Martin
Skylar	Rallison	Community Manager	CONNECTpreneur
Lena	Rantsevich	Cofounder	YourJustice
Matt	Rappaport		JHU Carey Business School
Sylvester	Raymond	President	JV Marketing Technologies LLC
Ivana	Raymond	Founder and CEO	The Points Travel
Suzanne	Reade	President	Chicago ArchAngels
Joe	Reddix	President and CEO	The Reddix Group
Mark	Reece	CEO	LCMGroup
Kylvyn Caleb	Regencia	Business Development Manager	Advance Intelligence Group
Bill	Replogle	CEO/CCO	Fuelhouse Brands
Victor	Rhoder	VP of Channels and Strategic Partnerships	AtWork Systems LLC
Nelson E.	Rincon	Chairman and CEO	Avzire Private Equity
Chris	Risey	VP	Decathlon Capital Partners
Phil	Robertson	Managing Partner	BDM Collective
Loena	Rodgers	Founder	The Egg-cellent Company
Shun	Rogers	Owner	JDSII Business Solutions
Mike	Rolfes	VP of Sales - IT	1RIVET International, inc
Robert	Rosenberg	President	S M C
Anne	Rosenblum	Business Investment Manager	Fairfax County EDA
Larry	Rosenfeld	Investor	McLean Partners LLC
Thomas	Ross	President	Palm Beach Business Group
Aneetra	Rowland	Founder	Emergent Access Services LLC

Charlotte	Safos	COO	ATI
Nathalia	Sanchez	Anxiety Health & Life Coach	Nathy Healthy Lifestyle
Reed	Sandridge	Director of Sales	ThinkNimble
Chris	Sarlo	Founder	Life Science Wealth
Olesia	Saviuk	Business Representative	Honeycomb Software
Anurodh	Saxena	Engineer	HYC
Michael	Sayo	Founder & Director	Matonyok Nomads Development Organization
Alan	Schlaifer	Chairman	Wharton DC Innovation Summit
Tom	Scholl	CEO / Investor	Shoalscrollschool&skull
Richard	Schreiber	Founder	NYC Autism Community Group
Gerhard	Schwandt	C - Level Coach	Gerhard Schwandt
Richard	Scott	CEO	Pi Omni Media, LLC
Raymond	Sczudlo	Principal	Sczudlo Advisors LLC
Joseph	Sebsibe	Accounting	
Maximus	Seneca	Founder & President	EVURO Inc
Rachel	Shaffer	BizDev	Glassix
Stephen	Shapiro	US Partner	eHealth Ventures
Robin	Shatzkin	Operations Director	Winning on Wednesday
Peter	Shin	Deputy Director	Korea Business Development Center
Evan	Shubin	President and Director of Investments	Candlelight Partners LLC
George	Sifakis	CEO	Ideaegen Global
Harjinder	Singh	Managing Director	ANB Technologies LLC
Ralph	Sklarew	Principal	Form and Substance, LLC
Martha	Sklavos	Founder & CEO	Aloe Therapeutics
Scott	Smouse	President	Enerconnex Global, LLC
Theodor	SN	Senior Associate	Strandview
Nina	Sodhi	Founder	Nackina
Natasha	Sodhi	Founder	Finkin
Mark	Sokpe	Commercial Banking Relationship Manager	Bank of America
George	Spears	CEO	Atero
Darby	Spitzer	Program Specialist	Mtech Ventures
Akanksha	Srivastava	Marketing Lead	Kiwitech
Ajay	Srivastava	President	eKuber Ventures Inc
Alexander	Starchenko	Managing Partner	First Imagine! Ventures
Michael	Steiner	Executive Director	BEST Robotics Inc
Ernest	Stern	Partner	Culhane Meadows PLLC
Chris	Stocks	Principal Consultant	SolasAI, Inc.
Franklin	Stowe	Financial Advisor	Merrill Lynch
Rajat	Sud	Analyst	EITP
Sulaiman	Sulaimani	Managing Director	Tristate Capital Financial
Eric	Sullivan	CEO	Uneo, Inc.
Jaipradeep	Sunthar	Tech Evangelist	Tringapps, Inc.
Sreejesh	Suresh	CEO	Creative11
Tulasi	Sushra		Johns Hopkins University
Tom	Swanson	President	TJSwanson Co.
Christopher	Swarbrick	Vice President	Blue Marlin Services
Arfa	Syed	Director, Growth and Strategy	Ad Hoc
Michael	Tadesse	Founder	Hewot
Rouzbeh	Taghizadeh	Chief Scientific Officer	AuxoCell
Mayur	Tailor	Founder	Divo Health
Nobu	Takanuma	Partner	Joyance Partners
Sravasti	Talukdar	Managing Partner	SB Ventures Partners LLC
Yu	Tian	Senior Scientist	Merck
Sharon	Tiger	HCM Consultant	Paylocity
Alex	Timofte	Founder	Neurotops
Camila	Torres	General Manager	Apertura
Charlie	Tran	CTO	Progene
Luke	Tubergen	Managing Partner	The Ember Company
Hyacinth	Tucker	Owner	The Laundry Basket LLC
Artem	Tulupov	Co-Founder	Somestack
David	Vaccaro	Investing Partner	Aurora Global Ventures
Joe	Van Cleve	VP	Van Cleve & Associates, Inc.
Richard	Van Horn	Founder	Pseudo-NYM
Clifton	Veach	Founder	Deaf-Tek Studio
Roy	Vella	Managing Director	Vella Ventures
Harry	Venezia	Regional Sales Director	Sunbelt Rentals
Jim	Voeller	Patent Counsel	Maier & Maier
Tom	Vogelsong	Director of Deal Flow / Investor	Kyto Technology and Life Science
Mark	Vreeke	President	Chemical Angel Network
S Eric	Wachtel	President/CEO	SmartMD Systems
Dane	Wagner	Head of Product Development	Blackhawke Behavior Science
Jordan	Wahbeh	Managing Partner	SVVG
Carl	Wallace	Managing Director	Corpscore, LLC
Kevin	Walsh	Principal	Atrox Partners, PLLC
Dong	Wang	CEO	Enrich Biosystems Inc.

Gary	Wang		
David	Weaver	President & Partner	Great Lakes Angels Fund & Birmingham Angels
Barry	Weinbaum	Financial Services Professional	New York Life
Benjamin	Weinberg	Founder	English from A to Z
Robert	Weissman	President	Suvarna Partners LLC
Skip	West	President	MAXSA Innovations LLC
Mark	Wettrich	Chairman	GreenBank Capital
Jordan	Weymouth	Founder	Lewlz
Zack	Whitacre	Chief of Staff and Head of Operations	Greenlist
Brandon	White	President	EDGE
Tommy	White	Director	AU Center for Innovation
Theresa	Whitfield	VP, Marketing Communications	Ethno Media Group
Cathryn	Wile	Director of Operations	AMI
Jason	Wiley	Financial Advisor	Northwestern Mutual
Will	Williams	CGO	
Tammy	Williams	Founder & CEO	
Hallie	Williams	Franchise Broker	Right Next Door
Joshua	Wink	Director of Partnerships	Cultivate Advisors
Michael	Wolk	Principal	ERA Group
Rayne	Woo	Founder	Find Safe Harbor
Amy	Wood	Program Manager	Pepperdine University
Carl	Wooten	CEO/Founder	GivGo
Paul	Wronkiewicz		
Paul	Wronkiewicz	Multi State Manager	Title Insurance
Jessie	Wu	Investor	CSC Upshot
Sam	Wyman	Managing Director	Bluepointe Consultants Group, LLC
Randy	Xu	COO	ARV Technologies
Kameran	Yakob	Founder	M.E.D. Energy Inc.
Yigang	Yang	Managing Partner	WaterStar Capital LLC
Randell	Young	General Partner	Venture-Net Partners
Mena	Yousef	Managing Partner	The Sales Scout
Sidney	Yuen	CEO	HBC
Jeehye	Yun	CEO	Redshred
Jon	Zaikowski	Assistant Director	New York Angels
Joseph	Zaloom	President	E3 Analytics Corp.
Valerio	Zanini	CEO	5D Vision
Matteo	Zanini	CEO	Dectillion
Ulugbek	Zayniev	CEO	Oyster Inc
Steve	Zeitchik	CEO	Agency 8200
Shengmin	Zhan	Senior Software Engineer	Coupang
Daniel	Zhang	Manager	VTMember
Lauren	Ziegler	Of Counsel	Nemphos Braue
Christine	Zmuda	Chief of Staff	Microsoft
Alena	Zv	Lawyer	AZ

THANK YOU TO OUR PREP TEAM



LAURA HILL
SVP
Equifi



INES LEBOW
CEO
Enterprise Transformation
Solutions



MARISSA LEVIN
CEO
Successful Culture
International



BOB LONDON
CEO
Chief Listening Officers



JET LU
Customer Solutions
Amazon Web Services



JACKIE LUO
Partner
TCV Growth Partners



MALI PHONPADITH
CEO
SOAR Community
Network



MICHAEL RIEMER
CEO & Board Member
Vocinity



EVAN SHUBIN
Pres. and Founder
Results.now, Inc. and
Candlelight Partners

SPONSORS



KEIRETSU



FORUM



Angels + Life.Sci Investors



ROBERT H. SMITH
SCHOOL OF BUSINESS

DINGMAN CENTER
for ENTREPRENEURSHIP



MIT Alumni Angels of
Washington DC



NABOE
SERVING OWNERS OF SMALL TO MID-SIZE BUSINESSES
CONNECT · LEARN · GROW

Want to Present or Sponsor at our Virtual Events?

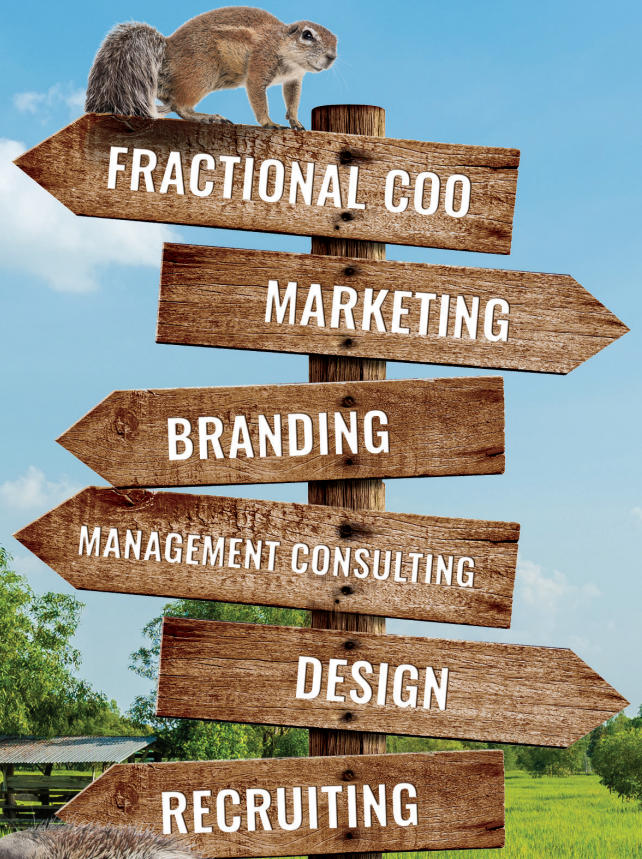
Email Skylar Rallison at
srallison@opus8.com
for more information

2023 Calendar

Jan. 26	Feb. 23	Mar. 30
Apr. 27	May 31	June 29
July. 27	Aug. 31	Sept. 28
Oct. 26	Nov. 30	Dec. 20

OH NUTS!

Time – something business owners don't get enough of. Let StellaPop give you back the luxury of focus. **You can't thrive without it.**



Say no to squirrel time!
Call us today: 703-956-3022



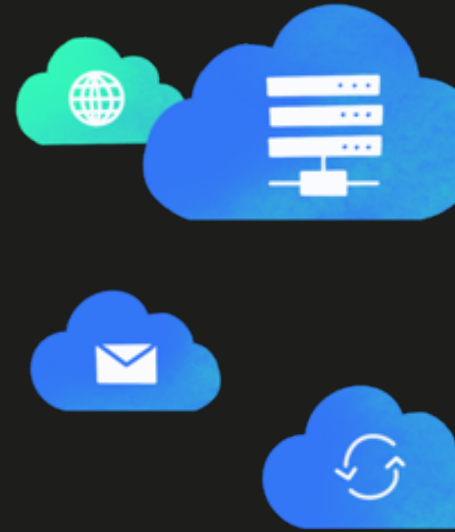
Management + Creative Consulting
Management | Branding | Marketing | HR | Workplace Services

 StellaPop

stellapop.com | 703-956-3022

SUCCEED IN THE DIGITAL WORLD

Put beautiful digital experiences in the hands of your customers and change the way your business works.



DevOps & Security

- + Migration
- + DevOps
- + CI/CD
- + Risk assessment & remediation



Customer experience

- + Voice of customer
- + User research
- + Usability testing
- + World-class experience design



Atlassian

- + Licensing
- + Tool configuration
- + Migration
- + Training and support



Product strategy

- + Technology maturity audit
- + Learn product validation
- + Post-launch growth
- + Opportunity space analysis



Agile software delivery

- + Architecture
- + Project management
- + Design
- + Full stack engineering
- + Testing & automation