

Networking & Pitch Showcase

Big Idea CONNECTpreneur Forum
The Best Networking Event in the MidAtlantic

June 4 | 8am - 12 Noon
McLean, VA

Agenda

8:00 - 9:20 am - REGISTRATION / NETWORKING

9:20 - 9:40 am - WELCOME REMARKS

S. TIEN WONG, CEO, Opus8; Founder, Big Idea CONNECTpreneur Forum

RAE STOTT, CEO, Refraction

JOHN NEWBY, CEO, Virginia Bio

ALEX THALACKER, Assistant Director, National Business Investment, Fairfax County Economic Development Authority

9:40 - 10:00 am - INVESTOR SPOTLIGHT

MAURICE BOISSIERE, Partner & Chief Customer Officer, DataTribe

SATHYA JANARDHANAN, Venture Partner, Ecphora Capital

TOM WEITHMAN, Managing Director, Virginia Venture Partners

10:00 - 10:50 pm - COMPANY SHOWCASE / ROCKET PITCH

Promising Early Stage Companies will be introduced by:

KEVIN LEES, Partner, Shulman Rogers

DEBBIE CLINE, Founder & Chief of Customer Success, Buzzy Rocket

Actuated Medical - Maureen Mulvihill

C2RE – Carbon to Rare Elements - Daniel Wood

IGC Pharma - Ram Mukunda

Lightrider - Jake Kropinski

TRADERVERSE - Sarim Alavi

Travel-EZ.com - Herbert Pearson

10:50 - 12:00 pm - EXPO & NETWORKING

Breakfast and Networking in the Atrium

Speakers



TIEN WONG, CEO, Opus8, Inc.

Mr. Tien Wong is a tech investor, entrepreneur, and CEO. He is Chairman & CEO of Opus8, Inc., a private investment and advisory firm investing in exceptional life science and tech enabled services companies, as well as specializing in raising capital for promising tech companies and alternative investment fund managers. He is Founder of CONNECTpreneur, a global community of 25,000+ founders, investors, CEOs, and business leaders. CONNECTpreneur organizes the world's largest monthly virtual investor pitch events as well as in-person Forums with upwards of 500 attendees, featuring VIP guests, speakers, exciting presenting companies, and the best CXO to CXO networking on the East Coast. Since 2012, over 1200 companies have presented, half of whom have received funding from investors from the CONNECTpreneur investor network. Mr. Wong is also a Venture Partner in IronGate Capital Advisors, a VC and Fund of Funds manager investing in dual use technologies; Investment Advisory Board member of Virginia Venture Partners; and Chairman of Lumious, an ed tech company which provides learning & development services to Fortune 500 customers.



RAE STOTT, CEO, Refraction

Rae Stott Co-founder and CEO of Refraction is a dynamic leader, working at the nexus of startups, culture and community. Rae has built a robust foundation in using culture and community to address complex challenges and wicked problems. Her career began in Australia, where she first built a community and founded a charity to address gaps in the social services ecosystem. She then helped deploy this formula against the failings in disaster response efforts, before turning her attention to technology companies. Her subsequent position as Director of Culture at GoCanvas, helped her prove the hypothesis that culture and community were as valuable in business as they are in addressing social issues. As CEO at Refraction, Rae has returned to the organization she cofounded over a decade ago to understand how community and culture support the startup ecosystem and economy in post-COVID world. A challenge she relishes.



JOHN NEWBY, CEO, Virginia Bio

John Newby is the CEO at Virginia Bio, the statewide non-profit trade association for the life science industry. Nearly 300 entities spanning biopharmaceuticals, medical device, med tech, diagnostics, digital health, bioinformatics, agriculture and industrial bio and related fields are based in Virginia, mainly clustered around research universities and medical institutions. Newby was formerly the Commissioner of the Virginia Department of Veterans Services (VDVS), where he supported delivery of education, workforce, and health services to Virginia's 725,000 veterans. Prior to leading VDVS Newby practiced corporate, intellectual property and Hatch-Waxman biopharmaceutical law at international law firms in Richmond and Washington DC, and at a multinational company. He also served as a combat aviator in the United States Air Force. Newby received a B.S. from the United States Air Force Academy, with Military Distinction, and his J.D. from the University of Virginia School of Law.



ALEX THALACKER, Assistant Director, National Business Investment, Fairfax County Economic Development Authority

Alex Thalacker is the Assistant Director of National Business Investment for the Fairfax County Economic Development Authority. He supports the efforts of the National Business Investment team to promote Fairfax County as a prime expansion location for companies in the Real Estate and Financial Services industries. He assists firms that are proposing to grow their operations in Fairfax County, and aids in the development of incentive and relocation packages for organizations considering the relocation of their corporate headquarters. In addition to his responsibilities at the FCEDA, Alex actively serves on the Board at the Greater Reston Chamber of Commerce. Prior to that, he served as the Board Chair for the Mount Vernon Springfield Chamber of Commerce from 2021 – 2023. He is also a member of the Emerging Leaders Council for the NAIOP Northern Virginia Chapter and is a graduate of Leadership Fairfax's LFI program (Class of '23).

Speakers



MAURICE BOISSIERE, Chief Customer Officer, DataTribe

Start-up junkie turned venture capitalist. As a partner at DataTribe, he invests in and co-builds cybersecurity startups. As a Terp, he spends his free time supporting the UMD community where he serves on the advisory boards of the Dingman-Lamone Center for Entrepreneurship at the Smith School of Business and at UM Ventures' Maryland Momentum Fund.



SATHYA JANARDHANAN, Venture Partner, Ecphora Capital

Sathya Janardhanan serves as a Venture Partner at Ecphora Capital, Baltimore's leading MedTech Venture Capital Firm. Sathya manages the dealflow, valuations, and pre-investment due-diligence. In addition to fund operations, Sathya is also working with Deborah Hemingway to launch Ecphora's Fund I in 2026, managing LP interactions. With a background in Chemical Engineering and 15 years of pharmaceutical development, executive management, and M&A experience, Sathya advises portfolio companies and prospective companies on a wide array of subject matters leading up to investment decisions and during the investment period.



TOM WEITHMAN, Managing Director, Virginia Venture Partners

Tom Weithman is Managing Director of Virginia Venture Partners (formerly CIT GAP Funds), a family of early stage direct investment funds with a 10-year+ track record generating both exceptional returns and socio-economic impact and VVP Fund of Funds, an indirect investment program backing GPs committed to the development of Virginia's risk capital ecosystem. In this role, Weithman manages Virginia's venture capital allocation in support of the U.S. Treasury Department's \$10B SSBCI program. Weithman is a proven operator, investor, director, executive and advisor with experience spanning federal, commercial and non-profit sectors. As architect and leader of Virginia Venture Funds, Weithman has established himself as one of the nation's foremost experts on quasi-public fund formation, early stage investment, accelerator development and the contribution of "catalytic capital" to innovation, commercialization and economic development.



KEVIN LEES, Partner, Shulman Rogers

Kevin advises private fund sponsors on the formation, structuring, and operation of investment platforms across strategies and jurisdictions. He focuses on delivering practical, execution-oriented solutions that enable sponsors to raise capital efficiently and deploy it at scale. Kevin brings nearly two decades of experience across leading global law firms and in-house leadership. He spent 13 years at Latham & Watkins and Hogan Lovells and served as Director of Legal and Compliance at ACON Investments, a private equity investment adviser. His in-house experience informs a commercial, sponsor-focused approach that prioritizes speed, clarity, and results. He represents sponsors across the United States, Latin America, Europe, and Asia in connection with private equity, credit, venture capital, infrastructure and energy, real estate, sports-related investments, and evergreen vehicles. He regularly advises venture capital platforms from first-time funds through scaled managers, including a sponsor that grew from a \$100 million inaugural fund to more than \$1 billion in assets under management.



DEBBIE CLINE, Founder & Chief of Customer Success, Buzzy Rocket

Debbie is co-founder, chief of customer success at Buzzy Rocket and yellow lab lover. From LA to London, she is well known as an expert in creating that certain elusive magic that drives explosive growth at the intersection of companies and customers. She has proven strategic vision, and isn't afraid to get in the trenches. In fact, she's been doing this at companies big and small for 25+ years. Her background includes executive level positions at both public companies and startups where she has proven over and over again that her passion, drive and results oriented perspective get it done. She is tenacious, loves the game changer and loves to win.

Transformative Tools for Brain Access & Deep Brain Therapy Delivery

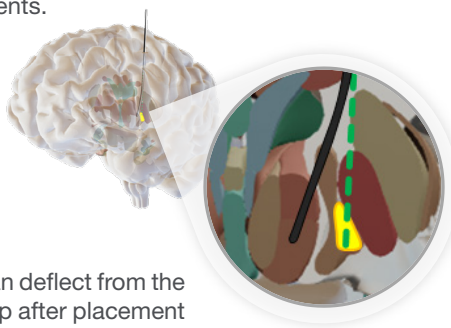
To Treat Debilitating Neurological Conditions

Since 2006, Actuated Medical has been dedicated to improving patient outcomes by integrating motion into medical devices. Developed with \$18M in non-dilutive funding, our **NeuralGlider®** technology uses gentle oscillation for less invasive brain implant insertion and targeted drug delivery. We're tapping into multi-billion-dollar neurological disease treatment markets – including treatment-resistant addiction, depression and Parkinson's Disease. Our **NeuralGlider Inserter** inserts brain implants with greater precision and less tissue damage to improve implant performance and longevity. The **NeuralGlider Injector** enables targeted drug delivery deep into the brain with finer, less invasive needles to minimize tissue trauma and medication loss – including brain cancer treatment, AAV-gene therapy infusion, and addiction treatments. 44+ third-party publications citing NeuralGlider are strengthening the scientific foundation to transition to clinical indications. Our first clinical goal is to improve deep brain stimulation (DBS) probe insertion, reducing clinician variability and the need for revision surgeries, demonstrated initially in Parkinson's patients.

10M+ People globally have treatment resistant neurological conditions, such as Parkinson's Disease, epilepsy, obsessive-compulsive disorder (OCD), and depression that are candidates for DBS treatments.

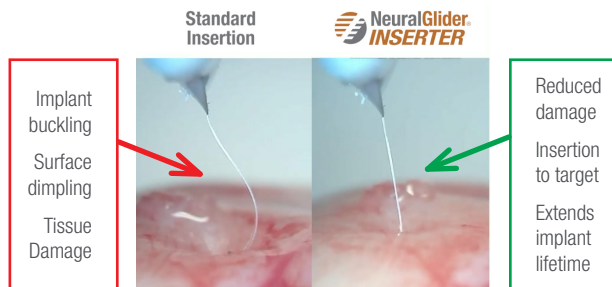
DBS can give them their lives back, when other treatments fail.

As probes travel through different brain tissues, they can deflect from the trajectory. With deflection, there can be a shift by the tip after placement leading to off-target effects, sub-optimal treatment, or potentially a costly second brain surgery. In the case of DBS probes, Wu et al. found that this occurs 3-8% of the time (~1 in 20 patients).



NeuralGlider uses patented gentle oscillating technology and a coupling mechanism to insert brain implants precisely with less force and damage to tissue.

Preclinical studies have shown the ability to hit small targets in the brain more accurately, resulting in improved implant performance and outcomes.



Revolutionary Implants

DBS, BCI Systems, Next Gen Probes



DBS
\$1.5B

CAGR
9.8%

Revolutionary Therapies

Addiction, Gene Therapy, Cancer Medication Infusion



AAV
\$3.9B

CAGR
40.1%

Financial Forecast (USD in Millions)	2025	2026	2027	2028	2029	2030
Revenue	\$3.5	\$4.5	\$7.9	\$56.7	\$63.7	\$65.4
COGS	\$1.9	\$1.4	\$1.5	\$6.9	\$7.3	\$8.1
Gross Profit	\$1.6	\$3.1	\$6.4	\$49.9	\$56.4	\$57.3
Expenses	\$1.9	\$7.8	\$8.9	\$15.4	\$17.2	\$18.8
Net Income	(\$0.3)	(\$4.7)	(\$2.5)	\$30.5	\$32.0	\$53.3

\$25M Pre-money is based on industry comparables

Non-dilutive Capital Invested Since Company Formation >\$50M

NeuralGlider INSERTER	Patented with early sales Billion-dollar initial clinical market
GripTract™ Endoscopic Tissue Manipulator	FDA Cleared & Patented FIM Cleveland Clinic & Geisinger 2025Q4
TubeClear™ Feeding Tube Clearing System	FDA Cleared & Patented 5000+ uses & no reported adverse events

Projected Interim Liquidity Events
Profits Planned to be Reinvested to Minimize Future Shareholder Dilution Risks



\$50M+ Non-Dilutive Capital

9 FDA 510(k) Clearances

46 US & Intl Patents

11 Registered Trademarks

ISO 13485 Certified

20,000 sq ft Facility

2006 est. PA C-Corp



Management Team



Maureen Mulvihill, PhD
President & CEO

Board Member of



Roger Bagwell, PhD
Director, Neural Device Operations



Douglas Dillon, MS
Director, QA & RA



Ian Charney
Director, Manufacturing



Team
13 Members



BOD
5 Members



MAB
11 Members

Deal Terms



- + \$10M Series A
- + \$25M Pre-money Valuation
- + \$25k Minimum Investment
- + Eligible Warrants Discounted 50%
- + Participating Preferred Shares
- + QSBS Entity Structure

Scan for deal documents, pitch deck, & more!



Let's Talk!

Maureen L. Mulvihill, PhD | CEO
maureen@actuatedmedical.com
814.355.0003 x100

ActuatedMedical.com

Market Size

Financials



Executive Summary

\$6M at a \$30M Post-Money Valuation.

The Problem: Strategic & Environmental Chokepoints

The global transition to advanced electronics, electric vehicles, and national defense systems is paralyzed by a dual crisis:

- Mineral Sovereignty: 90% of refined rare earth elements (REEs) are controlled by foreign entities. Traditional mining requires multi-year permitting and billions in capital expenditure, leaving the domestic supply chain deeply vulnerable.
- The Waste Liability: U.S. utilities and industrial companies are burdened by billions of waste (Coal Fly Ash, E-Waste, and Red Mud). These materials are multi-billion-dollar hazardous liabilities currently leaching into the environment.

The Mission: Securing Domestic Sovereignty

C2RE is a technology licensing company transforming toxic waste into Rare Earth "artificial ore" through industrial remediation. We provide a multi-year year shortcut to a domestic supply chain, enabling a self-reliant American manufacturing base for defense, aerospace, and semiconductor industries.

The Technology: "Modular Biological Refineries"

C2RE is developing a proprietary, multi-stage bio-chemical platform that replaces extreme heat and toxic acids with natural biological processes. Our closed-loop model ensures we capture value at every link of production:

- Stage 1: "Pre flight Assay": Proprietary diagnostics "fingerprint" feedstock composition to algorithmically map microbial extraction parameters before processing. AI powered genetic control
- Stage 2: Bio-Leaching: Microbial (fungi/yeast) consortia in massive off the shelf fermentation tanks naturally secrete acids to strip metals into a liquid solution at near ambient temperatures.
- Stage 3: Precision Recovery: On-site, targeted chemical precipitation from bio-leaching fluid combined with waste (coal ash, ewaste, red mud, mine tailings) results in **Metal Salts** tailored perfectly to midstream separations buyer specifications.

The Market: Tri-Sector Universal Platform

C2RE is a universal engine driving three multi-billion-dollar markets:

- Coal Fly Ash (Utility & Environment): A volume-driven market anchored by federal EPA remediation mandates for legacy ash ponds.
- E-Waste (Technology & Urban Mining): A high-concentration market for the recovery of Gold, Silver, Palladium, etc. from printed circuit boards.
- Red Mud / Sludge (Defense & Semiconductors): A strategic market for Gallium and Scandium, essential for 5G/6G hardware, AI chips, and high-performance alloys.

Competitive Defense in Layers

- Economic Inversion: While traditional miners pay to dig, C2RE partners can be paid to take the feedstock via remediation fees, creating a structurally near-negative cost basis.
- Recipe Lock: Our microbial strains and batch-tuning data are proprietary data assets; competitors cannot replicate our yields without the C2RE biological "software". We scale the biology, not the machinery
- Speed to Market: By co-locating at existing brownfield sites using modular hardware, C2RE reaches operational status in months rather than a decade of mining red tape.

Use of Proceeds

- Use of \$6M Capital: 45% (\$2.7M) for Industrial Scale-Up to TRL 7; 30% (\$1.8M) for IP Portfolio & Recipe Optimization; 25% (\$1.5M) for Strategic BD & Regional Hub Partnerships.

EXECUTIVE SUMMARY

Current market cap ~ \$30 million / Topline target: \$300-\$500M / Near-term valuation bridge:

Catalysts 4-6-9 months:

- i. 90% then 100% enrollment in [CALMA trial](#),
- ii. Potential positive Phase 2 readout
- iii. AHA workbench deployment

- 🚀 **The Opportunity:** Alzheimer's disease (AD) affects over 40 million worldwide. About 76% of these individuals have neuropsychiatric symptoms like Agitation in Alzheimer's disease (AAD), which lead to extreme caregiver burden and institutional care.
 - 🚀 **Addressable Market:** AD is a \$1.5T (2050) just in the US problem.
 - 🚀 **Our Solution:** [IGC-AD1](#), a rapid-acting liquid formulation that addresses agitation in AD
 - IGC-AD1 is in a Phase 2 trial (CALMA) with 80% of patients completed.
 - Pre-clinical, Phase 1, and interim Phase 2 data are promising.
 - 🚀 **Business Model (primary engine):** Agitation in AD, Secondary engines: sleep in AD and AI-SaaS + data infrastructure.
 - 🚀 **Valuation Gap:** Asymmetric upside - Current \$30M to peers ~ \$300M - \$2 B.
 - 🚀 **Why now?** Phase 2 nearing completion ~ 80% completed / ADDI engagement (Gates ecosystem) / major catalysts in next 4-6-9 months.
 - 🚀 **Current treatment options are limited.** The commonly prescribed FDA-approved therapy for agitation in Alzheimer's, Brexpiprazole, may take up to 10 weeks to demonstrate benefit and carries a boxed warning, highlighting a need for safer, faster-acting, alternatives.
 - 🚀 **AI Powered:** Complementing its therapeutic program, IGC Pharma is developing AHA and [MINT-AD](#), an AI-driven platforms to forecast cognitive decline in AD.
-

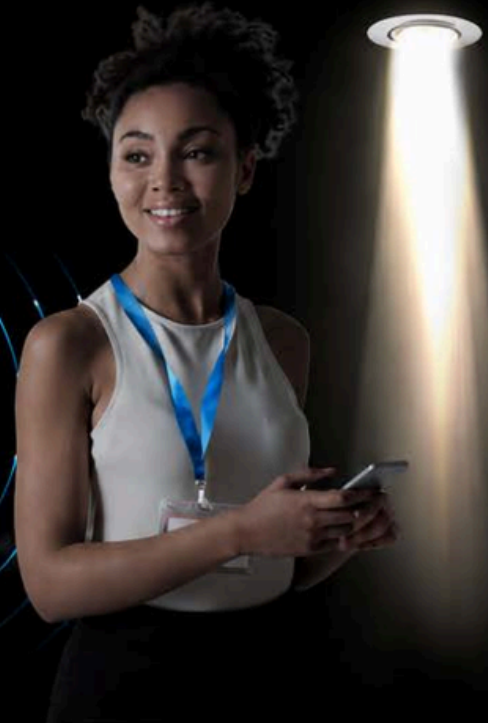


LIGHT RIDER

One light. Infinite data.

Powering the Future with Quantum Technology

Light Rider delivers quantum-powered solutions that secure, connect, and accelerate the digital world.



SECURE.



INTELLIGENT.



TRANSFORMATIVE.

WHAT WE DO



1. CLOUD QUANTUM COMPUTING

Access the power of quantum computing in the cloud. Solve complex problems. Accelerate innovation.



2. QUANTUM LIFI CONSUMER PRODUCTS

Quantum LiFi devices deliver real-time, unbreakable security and seamless data streaming for consumers and enterprises.



3. SOFTWARE DEVELOPMENT SERVICES

Custom software solutions designed, built, and delivered to solve your most critical business challenges.



WHY LIGHT RIDER



Quantum-Powered Solutions

Leveraging cutting-edge quantum technology for real-world impact.



Proven Innovation

Patented quantum LiFi technology delivering true entropy and secure communications.



Scalable & Versatile

Solutions for cybersecurity, AI, finance, defense, healthcare, and beyond.



Expert Team

A multidisciplinary team of engineers, scientists, and industry veterans.

BUILT FOR THE FUTURE



Cybersecurity



Artificial Intelligence



Finance



Healthcare



Government & Defense



Enterprise

INVEST IN THE FUTURE. INVEST IN LIGHT RIDER.

We are building the foundation for a quantum-secure, intelligent, and connected world. Join us on this transformative journey.



Let's build the future together.

lightriderinc.com

investors@lightriderinc.com

5825 University Research Ct Suite 2000, College Park, MD 20740



Dear Executive,

There are approximately 745 million traders worldwide, with over 400 million individuals currently engaging in social trading with friends and colleagues. According to research by Forbes, 80% of young adults seek financial advice from social networks such as X, Facebook, Reddit, Slack, StockTwits, Etoro, Discord, Telegram, and WhatsApp. However, these platforms were not originally designed for trading, leading to vulnerabilities. An FTC report revealed that \$2.7 billion was lost to social scams in the last three years alone.

Enter TRADERVERSE, an AI-powered Social Finance Network tailored for traders, investors, and financial learners. It aims to democratize financial education and foster peer-to-peer learning. The platform features AI-based governance, detailed discovery tools, a gamified rewards system, advanced collaborative and analytical tools, and a marketplace for creators.

At the heart of TRADERVERSE is its Credibility System and Governance AI, which assess social and investment behaviors to assign Credibility Points. These points are crucial for validating the credibility of traders within the community and are gamified to make the experience engaging and entertaining.

TRADERVERSE seamlessly integrates with over 30 brokerages, exchanges, and wallets, including Etrade, Fidelity, Schwab, TD Ameritrade, TradeStation, Robinhood, Binance, Coinbase, Metamask, Trustwallet, and more. Users can share and scan portfolios socially and execute trades directly from the platform.

The platform offers a 4-tier SaaS model, starting with a freemium tier supported by ads. Users can then explore premium plans ranging from \$9.99 to \$149.99 per month, each unlocking a range of advanced features, analytical tools, datasets, and real-time information to empower users in their financial endeavors.

The founders of TRADERVERSE boast eight years of experience in social trading and have cultivated a network of 600 influencers with a combined outreach of over 50 million followers. The go-to-market strategy involves onboarding these influencers and allowing them to build their communities within TRADERVERSE.

TRADERVERSE is poised to revolutionize how people connect, engage, learn, and collaborate in the realm of finance. Whether users seek like-minded investors, refine strategies, gain insights from peers, or capitalize on emerging market opportunities, TRADERVERSE offers the ultimate platform to enhance their financial knowledge and investment journey.

CONTACT INFORMATION

Sarim Alavi, CEO

s.alavi@traderverse.io

FIND US AT

Parent Company - traderware.com

Flagship Product - traderverse.io



Executive Briefing TRAVEL-EZ.com Virtual Presence System and Method

-Herbert C. Pearson-
Cre8 Ideaz, LLC

Overview: Our innovative virtual telepresence system integrates multiple virtual telepresence technologies, enabling users to experience remote locations through various devices, and ultimately throughout the world. This system will be accessible through a single website Travel-EZ.com, providing seamless access and control over these devices for a more immersive and interactive experience, in 'real-time'

Key Features:

- **Diverse Device Integration:** Our system supports a wide range of virtual telepresence devices:
 - **Human Robot™** - A person who carries a tablet so YOU, the "TRAVELER", can interact directly with the person at the remote location (tour guide, real estate agents, etc.).
 - **DRONE Pilot - To be used by a Human Robot™** to give you overhead experience(s).
 - **GoPRO Operator - To be used by a Human Robot™** to experience the excitement and thrills of skydiving; roller coaster rides; motor cross races; bike races; adventure and so much more.
 - **DashCAM Driver - To be used by a Human Robot™** Attached to cars; motorcycles to give a 'scenic experience' along parkways; narrow mountain roads, and more.
 - **Telepresence Robot** - A robot to directly interact with the public and allows the "TRAVELER" to see and hear remotely at an event, in a town, state, and/or country in Real-Time, worldwide.
 - **Stationary Cameras** - Set-up in "Key Locations" to benefit the "TRAVELER".
 - **Multi-View** – Ability to see through multiple 'Methods of Travel' on one screen in real time.
 - **Ride-Along** – Enables several peoples' profiles on one robot, so they can see & hear everything.

These devices will all be accessible through a unified platform on TRAVEL-EZ.com in 'Real-Time'.

- **Hierarchical Query Database:** The system utilizes a hierarchical query database to store geographic coordinates, device types, and features, enabling efficient device management and control in 'real-time'.
- **Immersive Experience:** Users can utilize their virtual telepresence to experience a remote location through a plurality of different types of virtual telepresence devices to experience a culture and language.

Applications:

- **Virtual Travel:** Users can explore remote locations, pre-visits, and experience destinations without physically traveling. This is particularly valuable in the age of limited travel opportunities, high expense, political unrest, weather uncertainty, curiosity seekers, immersive language appeal, and so much more.
- **Adventure and Exploration:** Users can follow and interact with adventurers such as mountain climbers, divers, and regular people in different locations around the world, experiencing their journeys in 'real-time' and able to hear and see when talking with people in a distant land in real-time..

Market Opportunity: The virtual telepresence market is rapidly growing, driven by advancements in technology and the increasing demand for remote experiences. Our system addresses the limitations of traditional virtual presence technologies by offering a comprehensive and flexible solution that caters to various industries, including travel, education, remote monitoring and so much more.

Investment Opportunity: We are seeking 'angel-investors who share the same vision and would be willing to invest up to \$250,000 (negotiable) to help us get to 'proof of operation'. Your investment will help us enhance our technology, expand our market reach, and bring innovative virtual experiences to users, in 'real-time'. It's possible for Travel-EZ.com to become a multi-billion dollar company at some point in the not-too-distant future, if it is managed properly from a business perspective.

Conclusion: Our virtual presence system represents a significant advancement in remote experience technology. By integrating multiple devices and providing a seamless user experience, we are poised to revolutionize the way people explore, learn, and interact at remote locations. Once we are able to get to 'proof of operation', then we intend to sell everything (patent, platform, website, LOGOS, and contacts) to a conglomerate corporation for the right price (i.e., Google, Alphabet, Amazon, etc.). We invite you to join us on this exciting journey and be part of the future of our virtual presence system.

Cre8 Ideaz, LLC – Herbert C. Pearson, Founder/CEO - (703) 447-0076

info@travel-ez.com

Our Partners



Fairfax County

Economic
Development
Authority

FAIRFAX COUNTY ECONOMIC DEVELOPMENT AUTHORITY

Fairfax County Economic Development Authority (FCEDA) provides a wide array of free and confidential services and information to assist new, expanding and relocating domestic and international businesses. FCEDA's mission is to promote the competitive advantages of Fairfax County and influence the growth of a diverse and innovative business ecosystem that enhances the tax base, creates demand for commercial space, and supports an extraordinary and equitable quality of life. Headquartered in Tysons, Fairfax County's largest business district, the FCEDA also maintains offices in major business hubs around the world: Bangalore/Mumbai, Berlin, London, Los Angeles, Seoul, and Tel Aviv. For more information, visit www.fairfaxcountyeda.org.



REFRACTION
INNOVATION HUB

REFRACTION

Refraction is a leading nonprofit innovation hub in Northern Virginia, that provides mentoring, programs, and office space for startups and high-growth companies to help create jobs in the greater Washington region. In five years, more than 300 member companies have collectively raised over \$350 million in capital. Refraction's partners include Amazon, Cox, Dominion Energy, MITRE, Fairfax County, Arlington County, Loudoun County, Virginia Innovation Partnership Corporation, and Virginia Tech.



NEXT powered by SHULMAN ROGERS

NEXT disrupts the legacy legal industry by offering a broad range of fixed fee solutions (stand-alone products and annual legal plans) delivered by senior attorneys with valuable business expertise. NEXT solves the problem that startup and emerging growth companies face when launching their business as well as scaling: lack of access to predictable legal fees, seasoned attorneys, the latest technology and key business services. We use cutting edge technology platforms to deliver real efficiencies, transparency and a collaborative environment for clients, attorneys and investors. NEXT partners with its clients to de-risk their business and get to the NEXT level, together reaching each milestone of success. NEXT is powered by Shulman Rogers, a full-service law firm with nearly 100 attorneys offering superior services across a wide range of practice areas. The firm also offers robust personal services such as residential closings and trust and estate planning. Shulman Rogers has earned its reputation for providing quality representation, business insight and client value, serving as a highly attractive alternative to larger, higher-priced firms and smaller, less diverse firms. Learn more at ShulmanRogers.com.



BUZZY ROCKET

Buzzy Rocket was founded 12 years ago with the mission to help startups grow and scale their businesses. Debbie and Victoria do this with their decades of marketing experience combined with their first hand experience founding, growing and scaling successful startups. They only work with 6 startups at any given time so they can provide 1:1 attention to you and your team. The Buzzy Rocket team is also made up of web developers, graphic designers and copywriters so they can help you easily execute the marketing strategy they create. Learn more about their services at BuzzyRocket.com.



NORTHERN VIRGINIA TECHNOLOGY COUNCIL

NVTC is the trade association representing the Northern Virginia technology community. As one of the nation's largest technology councils, NVTC serves companies from all sectors of the industry, from small businesses and startups to Fortune 100 technology companies, government contractors, as well as service providers, academic institutions, and nonprofit organizations. More than 450 members look to the organization as a resource for networking and educational opportunities, peer-to-peer communities, policy advocacy, industry promotion, fostering of strategic relationships, and branding of the region as a major global technology center. Learn more at www.nvtc.org.



NORTHERN VIRGINIA CHAMBER

The Northern Virginia Chamber, the Voice of Business in Northern Virginia™, represents over 650 local employers with more than 500,000 regional employees. The Northern Virginia Chamber is the leader in advancing innovative solutions to the region's priorities in transportation, education, workforce, and economic opportunity. For 90-plus years, the Northern Virginia Chamber has been working hand-in-hand with companies in the region to build a strong business community.

Thank you to our Partners



THANK YOU TO OUR HOST COMMITTEE



**SCOTT
ALFORD**

Oraclum Capital



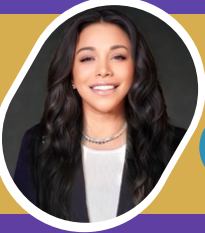
**THOMAS
ANDERSON**

DataStrategi



**MARCO
AVILA**

MDHCC / WSP



**ERIKA
BAEZ-GRIMES**

The BPH Group



**JEFF
CHERRY**

Conscious
Venture Partners



**CHRIS
FREW**

BioBuzz



**JAMES
GIBBONS**

Alpha Pointe
Capital



**ANITA
GUPTA**

KiwiTech



**DEBORAH
HEMINGWAY**

Ephora Capital



**MIA
HORM**

Creative Analytics



**NICHOLE
KELLY**

Innovation Maryland



**MIKE
MALLOY**

Malloy Industries



**LAURA
NEUMAN**

NextGen Venture
Partners



**GUC
OZENCI**

Founder Institute



**JOHN
YETMAN**

The Capitol Bay Group

THANK YOU TO OUR PREP TEAM



MICHAEL HANSON
Consultant
Optimum Dynamics LLC



LAURA HILL
Chief of Staff
Bentley



MARISSA LEVIN
CEO
Successful Culture
International



JET LU
Customer Solutions
Amazon Web Services



JACKIE LUO
Founder
BAM Advisory



MICHELLE MILLER
Founder
MRM Consulting



JOHN MORGAN
General Partner
Morgan Global



EVAN SHUBIN
Pres. and Founder
Results.now, Inc. and
Candlelight Partners



MALI PHONPADITH
CEO
SOAR Community
Network



MICHAEL RIEMER
CEO & Board Member
Vocinity

Big Idea
CONNECTpreneur

**LIFE SCIENCE
INVESTOR RECEPTION**

June 22
San Diego, CA



**UPCOMING
VIRTUAL EVENT!**

August 5
Online via Zoom



**UPCOMING
IN-PERSON EVENT!**

September 23
Washington, DC





VIRTUAL AND IN-PERSON

CALL FOR PRESENTERS

Unprecedented
**Networking
sessions**
before, during, and
after each event

Free lifetime
admission
to all
CONNECTpreneur
Forums

Post-event recap to
**300k business
leaders**
in our Community

SCAN HERE FOR
THE IN-PERSON
BROCHURE:



SCAN HERE FOR
THE VIRTUAL
BROCHURE:



Get funded with our



Private Investor Platform



One of the nations largest investor communities of 4,500+ HNW/UHNW private investors, angels, family offices, investment groups, and small institutional investors.

**Exclusive,
cost effective,
& reliable**

**Vetted, qualified,
accredited
Investors**

**We
guarantee
our results**



**View the full
brochure**

Tien Wong
CEO
twong@opus8.com

Skylar Rallison
Community Manager
srallison@opus8.com

● SUPERCHARGE YOUR
RAISE WITH OUR

CROWDFUNDING SERVICES

We combine high-impact messaging, investor psychology, and access to our unique community of over 315,000 accredited and retail investors, business leaders, and influencers.

WHAT WE OFFER

- ✓ Dedicated Email Blasts
- ✓ Multi-Email Drip Campaigns
- ✓ Campaign Strategy Support
- ✓ Video and Page Feedback
- ✓ Live Investor Engagement Opportunities



View the full
brochure



FFX MARKS THE SPOT

Where business comes to dent the universe

At the nexus of access and influence exists a place where the frontiers of the future are being reimagined. Here in Fairfax, businesses from rising startups to Fortune 500s find fertile ground to put down roots and scale to new heights.

From here, you can dent the universe.



www.fairfaxcountyeda.org



CONNECT with us!

